

YOUR NEAREST TRADESMART MEMBER IS:



See back page for store locations

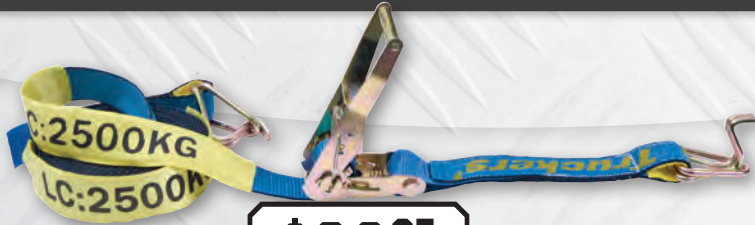
WWW.TRADESMART.NET.AU

1ST JULY 2022 - 30TH SEPTEMBER 2022



# BIG BRANDS SALE

P/N: RTD055PL  
**HAND RATCHET AND STRAP 50MM X 9M**



**\$23<sup>95</sup>**

**GREAT BUY!**

**BEAVER®**

**TESTED LOCALLY  
TO STRICT  
QA GUIDELINES**

- Double Locking Mechanism
- Hook & Keeper at each end
- Complies to AS/NZS 4380-2001
- Lashing Capacity LC:2500kg
- 50mm x 9 Metres Polyester Webbing with Protective Sleeves

P/N: 660AN  
**TRIGGER ACTION GREASE GUN**



**\$149<sup>00</sup>**

**GREAT BUY!**



- 450g capacity
- Delivers up to 1.6g of grease per stroke
- Suitable for all grease grades up to NLGI3
- High volume / high pressure option
- Manufactured in Germany

P/N: GCR40  
**40" GEIGER CREEPER**

**\$175<sup>00</sup>**

**GREAT BUY!**



- Thick wall injection blow moulded deck
- Steel reinforced caster mounts
- Integrated side trays
- Elevated headrest
- 150 kg Load Rating

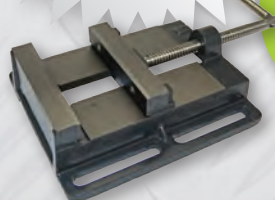
P/N: TD1316F  
**ITM PEDESTAL FLOOR DRILL PRESS**  
BONUS: ITM DRILL PRESS VICE

**TradeSmart  
BONUS  
DEAL!**

**\$779<sup>00</sup>**

**GREAT BUY!**

**BONUS  
ITM DRILL  
PRESS VICE  
P/N: VDP102**



- Quality casting, construction & componentry
- Emergency stop
- NVR safety switch
- Chuck safety guard.

**SHOP SMART AT...  
TRADESMART**



**HAND TOOLS**

**MUMME  TOOLS**

*Crafted Tough Since 1936*

**8PC LONG PIN PUNCH SET**

- Used to drive out pre-loosened pins where additional length is needed
- Tough and resilient shaft made from high quality tool steel.
- Industrial quality.
- Hardened and tempered for maximum toughness.
- Set Components: 2.5mm, 3mm, 4mm, 5mm, 6mm, 6.5mm, 8mm, 10mm



4PPLSET8  
**\$89<sup>95</sup>**  
8 PIECE SET!

**PIN PUNCH HOLDER**

- Used to safely and easily hold pin punches when driving out pins
- Greater control when striking pins, reducing the likelihood of mishits compared to traditional methods
- Hi-vis, comfortable rubber grip to reduce hand fatigue
- Designed for use with long pin punches & starter drifts



4SPPH  
**\$89<sup>95</sup>**  
NEW PRODUCT!

**SCAFFOLD HAMMER**



- Dual-purpose tool used for scaffold assembly
- Forged and heat treated for maximum strength
- Correctly balanced for comfort and ease of use
- Knurled handle for greater grip and control

5HSC  
**\$84<sup>95</sup>**  
GREAT VALUE!

**SLEDGE HAMMERS**

- A well balanced versatile sledge hammer for building, construction and demolition work
- Hardened and tempered faces for durability and longevity
- Heads secured to an Australian hardwood handle



PRODUCT CODE	SIZE	PRICE
5HSH04	4LB	\$84.95
5HSH07	7LB	\$105.00
5HSH08	8LB	\$109.00
5HSH10	10LB	\$129.00

**HEXAGON FENCE BARS**

- Used for digging holes, breaking up clay and cutting through tree roots
- Finely ground and sharpened chisel end
- Fence bar knobs are forged and made to optimum size for tamping and packing soil



PRODUCT CODE	SIZE (MM)	PRICE
5FB165025	1650 X 25	\$99.00
5FB180025	1800 X 25	\$115.00



**HEXAGON PODGER BARS**

- Used for levering and aligning
- Heel set to 40 degrees for optimum levering
- Blade is ground to 30 degrees for easy entry between surfaces
- Hexagon profile to minimise bar roll



PRODUCT CODE	SIZE (MM)	PRICE
5POB45020	450 X 20	\$44.95
5POB60020	600 X 20	\$55.95
5POB90020	900 X 20	\$64.95



 **THOR HAMMER**



**NEW**

REPLACEMENT  
FACES  
AVAILABLE

**NEW**

- TH310PH
- TH312PH

- TH210PH
- TH212PH

**875G (2LB) #1 32MM COPPER FACE HAMMER WITH PLASTIC HANDLE TH310PH (810172)**

**\$99**  
NEW PRODUCT

**1270G (2-3/4LB) #2 38MM COPPER FACE HAMMER WITH PLASTIC HANDLE TH312PH (810173)**

**\$139**  
NEW PRODUCT

**775G (1-3/4LB) #1 32MM COPPER/RAWHIDE FACE HAMMER WITH PLASTIC HANDLE TH210PH (810174)**

**\$109**  
NEW PRODUCT

**1080G (2-1/2LB) #2 COPPER/RAWHIDE 38MM HAMMER WITH PLASTIC HANDLE TH212PH (810171)**

**\$149**  
NEW PRODUCT

**8" INDUSTRIAL GRINDER WITH LINISHING ATTACHMENT AA362W8 (808440)**

**Abbott & Ashby**

**\$579**  
GREAT VALUE!



**20L S/S TANK DIY WORKSHOP WET/DRY VACUUM 1250W VMVQ1220SC (808510)**

**Vacmaster**

- Power Take Off
- Heavy Duty Construction
- Quick-Lock Connection

**\$179**  
GREAT VALUE!



Distributed By: **WHITE INTERNATIONAL**

[www.whiteint.com.au](http://www.whiteint.com.au)

**One Eleven** You know it's **TOUGH**  
STORAGE SOLUTIONS  
sales@1-11.com.au Est 1994 www.1-11.com.au



**One Eleven**

**1-11 TOUGH**

**EX Series**

**Senator**

**CONTRACTOR ONE**



**FAMOUS TOLEDO**  
EXCELLENCE BY DESIGN

### Torque Wrenches



- Click-stop design with heavy duty cam for superior strength and durability
- Micrometer style adjuster enables precise torque setting

Part No.	Sq. Dr.	Dual Scale	Length	Price
301097	1/4"	2 - 24Nm/17 - 212In. Lbs.	280mm	\$99.00
301098	3/8"	7 - 108Nm/5 - 80Ft. Lbs.	370mm	\$79.00
301099	1/2"	14 - 203Nm/10 - 150Ft. Lbs.	470mm	\$89.00

### Circuit Tester

Digital LCD 6-24 Volt

**\$75<sup>00</sup>**  
GREAT VALUE!



302191

- Professional trade quality circuit testing tool with unique digital LCD display that provides an accurate voltage value of the circuit

### Wheel Nut Socket Set Metric 3pc

**\$59<sup>95</sup>**  
GREAT VALUE!



309300

- Deep impact sockets with removable protective outer shell
- 1/2" Sq. Dr
- Size: 17mm, 19mm, 21mm

### Nut Cracker Bar

1/2" Sq. Dr. 410mm

321032

- Designed for removing seized and stubborn nuts and bolts
- Heavy duty "Strike-thru" head
- Ergonomic rubber handle provides comfort and firm grip

**\$199<sup>00</sup>**  
GREAT VALUE!



### Torque Multiplier Kit

3200mm

**\$530<sup>00</sup>**  
GREAT VALUE!



309055

- Professional heavy duty tool for removing stubborn wheel nuts on heavy vehicles, light commercial trucks, buses and vans
- Socket size: 24, 27, 30, 32, 33, 36, 38mm



### Adjustable C-Hook Wrench Set 35-120mm

315160

- Used to tighten, loosen or hold machinery components such as retaining rings, couplings, or any notched or multi-faced tool
- Size range: 35-120mm

**\$139<sup>00</sup>**  
GREAT VALUE!



# KINCROME

**\$5<sup>95</sup>**

HOT PRICE!



**KINCROME PERMANENT MARKER FINE POINT - BLACK 5 PACK**  
K11785

**\$14<sup>95</sup>**

GREAT VALUE!



**KINCROME MARKER STARTER PACK - MIX 10 PIECE**  
K11820

**\$44<sup>00</sup>**

SUPER DEAL!



**KINCROME FILE SET 200MM (8") 3 PIECE**  
K6402

**\$69<sup>00</sup>**

HOT PRICE!



**KINCROME PUNCH & CHISEL SET 12 PIECE**  
• 3 Cold chisel-16, 19, 25mm • 1 Cape punch  
• 4 Pin punches-2.5, 4, 5, 6.5mm • 1 Centre punch-5mm  
• 1 Drift punch-5mm • 2 Nail punch-2.5, 5mm  
07104

**\$175<sup>00</sup>**

EACH GREAT VALUE!



**KINCROME REVERSE GEAR SPANNER SETS 8 PIECE**  
**METRIC** 8-19mm **K3017**  
**IMPERIAL** 5/16-3/4" **K3018**

**\$75<sup>00</sup>**

GREAT VALUE!



**KINCROME IMPACT BIT SET 32 PIECE**  
K21005

25mm LENGTH 50mm LENGTH 75mm LENGTH TORX ZONE

**\$105<sup>00</sup>**

GREAT VALUE!



**KINCROME IMPACT BIT SET 46 PIECE**  
K21013

25mm LENGTH 50mm LENGTH 75mm LENGTH TORX ZONE

**\$149<sup>00</sup>**

HOT PRICE!



**KINCROME SOCKET SET 39 PIECE**  
• 18 **METRIC** 3/8" Drive Sockets: 5-22mm  
• 13 **IMPERIAL** 3/8" Drive Sockets: 1/4-1"  
• 8 Accessories  
K28011

3/8 DRIVE

VISIT [WWW.KINCROME.COM.AU](http://WWW.KINCROME.COM.AU)





TOOLS & EQUIPMENT

**Holemaker**  
Drilling Solutions By ITM®

**PRO 35 MAGNETIC DRILL**

- Quality, Compact & Robust European Made Machine
- Lightweight, only 10kg! Ideal for onsite & overhead tasks
- Capacity (diameter) 35mm
- Capacity (depth) 52mm
- Dual rail slide system



**\$1149.00**

GREAT VALUE  
HMPRO35

**CONSTRUCTION SERIES GENERATOR**

- 17hp motor
- 10 KVA
- 8000 Max. Watts
- 25L Fuel tank
- IP66 Rated outlets
- Residual current device
- 2-year warranty
- Electric start with remote control
- Sine wave tech T.H.D. <5%



**\$2449.00**

GREAT VALUE  
TM520-8000

**Drill Doctor**  
The Drill Bit Sharpener



**DRILL DOCTOR DRILL BIT SHARPENER**

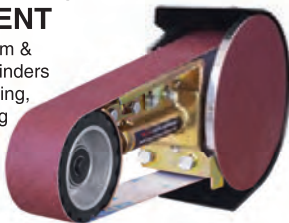
- Creates & sharpens split point bits • Adjustable relief angle • 240V motor • 3-year warranty

Drill Bit Capacity	Sharpening Angle	Part No.	Price
2.5 to 13mm	118°	DDXP	\$259
2.5 to 19mm	115° to 140°	DD750X	\$560

**Multitool**  
INTERNATIONAL

**BELT GRINDING ATTACHMENT**

- Suits most 150mm & 200mm bench grinders
- Ideal for sharpening, sanding, polishing & more
- Toolless belt change system
- 178mm sanding disc



**\$579.00**

GREAT VALUE  
PO362-200

**200MM BENCH GRINDER WITH MULTITOOL BELT ATTACHMENT**

- Powerful 600W induction motor • Capacitor start for maximum performance • 915mm x 50mm belt
- 178mm disc • 25mm wide grinding wheel
- Durable cast iron body • Heavy duty tool rest



Belt Size	Part No.	Price
915 x 50mm	PO362	\$289
1220 x 50mm	PO482	\$529

**TORQUE WRENCHES**



- Nm & Ft-lb marking scales
- Non-slip knurled handle
- Premium quality made in Taiwan
- Supplied in blow mold plastic case



Part No.	Drive	Torque Range	Price
M7-TE225250N	1/4"	2.8-28.2Nm (2-20 ft-lb)	\$69
M7-TE320110N	3/8"	20-110Nm (14.8-81.1ft-lb)	\$69
M7-TE428210N	1/2"	28-210Nm (20.7-154.9ft-lb)	\$72
M7-TE450350N	1/2"	50-350Nm (36.9-258.1ft-lb)	\$125
M7-TE820100N	1"	200-1000Nm (166-719ft-lb)	\$869

**EXTRA HEAVY DUTY BOLT CUTTERS**

- Optimal performance for cutting high tensile material
- Two stage heat treated, precision machined jaws for extended cutting and resilience
- Adjustable arms
- Solid forged steel handles for durability
- Built in stops for added safety



Part No.	Length	Price
TM601-075	750mm	\$129
TM601-090	900mm	\$169
TM601-105	1050mm	\$199

**Ehoma**  
Clamping Solutions By ITM®

**FORGED STEEL C CLAMPS**

- Tempered & hot forged steel
- Nickel & chrome plating
- Hardened Acme spindle
- Swivel pad ensures even pressure is applied



Part No.	Span x Depth	Clamping Force	Price
EC-BC4	100x50mm	900kg	\$75
EC-BC5	125x65mm	850kg	\$78
EC-BC6	150x75mm	1000kg	\$88
EC-BC8	200x100mm	1000kg	\$117

**PROFESSIONAL MECHANICS BENCH VICES**

- Rugged all cast iron construction
- Extra H.D. sliding jaw
- Integrated anvil for shaping & beating



Part No.	Jaw Width	Weight	Price
TM100-100	100mm	10.0kg	\$149
TM100-125	125mm	15.5kg	\$209
TM100-150	150mm	18.0kg	\$259

**HINGED PIPE VICES**

- Hardened steel jaws
- Close grained cast iron body
- Perfect for repetitive clamping tasks
- Hinged section allows quick access to material



Part No.	Pipe Diameter	Price
TM114-068	8 - 68mm	\$99
TM114-078	8 - 78mm	\$139
TM114-120	13 - 120mm	\$279

**PEDESTAL DRILLS**

- Quality casting, construction & componentry
- Emergency stop NVR safety switch
- Chuck safety guard
- Drill chuck & arbor



TradeSmart  
**BONUS DEALS!**  
BUY A TD1316F,  
GET A BONUS DRILL  
PRESS VICE VDP102

Capacity	Spindle	Motor	Speed	Part No.	Price
16mm	#2 MT	550W	16	TD1316F	\$779
20mm	#3 MT	750W	12	TD1420F	\$1079
25mm	#3 MT	1500W	12	TD1825F	\$1569







# AIR TOOLS

## ALUMINIUM TWIN TANK COMPRESSORS

- Perfect for nailing applications
- Oil free pumps for virtually maintenance free operation
- Very quiet, ideal for indoor use
- Light weight aircraft aluminium alloy tanks
- Max. pressure: 135psi (9.3 Bar)



Motor	FAD	Tank	Noise	Part No.	Price
1hp	62L/min	10L	60 dB	TM350-10010	\$499
2hp	125L/min	16L	67 dB	TM350-20016	\$599

## HIGH-FLEX AIR HOSES

- Hybrid polymer high-flex hose
- Anti-kink technology, the hose will not kink when under pressure
- Superior all weather flexibility -5°C to 65°C
- 300psi maximum working pressure
- Hi-visibility for safety
- Nitto style fittings



Part No.	Description	Price
TM300-315N	15M 3/8" I.D.	\$59
TM300-330N	30M 3/8" I.D.	\$89



## 15M RETRACTABLE AIR HOSE REEL

- Reinforced PVC air hose
- Auto retractable
- Auto lock to any length
- Auto track guided hose laying system
- Hose length: 15m
- Hose I.D.: 10mm (3/8")



**\$165.00**  
GREAT VALUE  
TM300-015



**\$289.00**  
GREAT VALUE

M7-QP212N



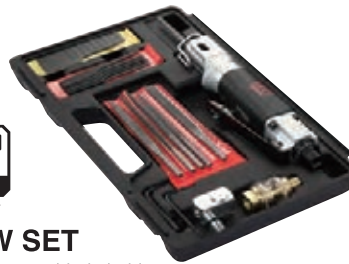
## 75MM HIGH-SPEED MINI AIR SANDER SET

- Free speed: 18,000rpm
- 10 Piece kit includes: 50 & 75mm pads and discs, coupler, oil bottle



**\$325.00**  
GREAT VALUE

M7-QD291N



## AIR SAW SET

- Quick change saw blade holder
- Adjustable guide controls depth of cut
- 10mm stroke length
- Kit includes: 6x 24T saw blades, 6x 32T saw blades, 5 piece file set, inline oiler



**\$230.00**  
GREAT VALUE

M7-SC0517C



## AIR HAMMER SET

- Blows per minute: 3200bpm
- Shank: Round 10.2mm
- Includes 5 piece chisel kit

# KINCROME

FROM **\$849**  
GREAT VALUE!



## KINCROME UPRIGHT TRUCK BOX 3 DRAWER 700MM

51085W	White	\$849.00
51085	Black	\$859.00

**\$1849**  
EACH  
SUPER DEAL!



## KINCROME CONTOUR® TOOL TROLLEY 42" 9 DRAWER

- Measurements: W 1059 x D 475 x H 995mm

● K7759 ● K7759Y ● K7759G

**\$1299**  
EACH  
HOT PRICE!



## KINCROME CONTOUR® TOOL CHEST 42" 8 DRAWER

- Measurements: W 1059 x D 475 x H 485mm

● K7758 ● K7758Y ● K7758G

**\$359**  
HOT PRICE!



## KINCROME PORTABLE AUTOMOTIVE TOOL KIT 120 PIECE

- 17 METRIC Sockets: 8-24mm
- 11 METRIC Combination Spanners

K1855



**\$359**  
GREAT VALUE!



## KINCROME PORTABLE TOOLKIT 85 PIECE

- 19 METRIC Sockets 1/2" Square Drive: 8-32mm
- 11 METRIC Combination Spanners: 8-19mm

K1859



**\$599**  
HOT PRICE!



## KINCROME CARGO CASE LARGE 1200MM

- Weight: 14Kg • Capacity: 229 Litre
- Measurements (External): W 1200mm x D 580mm x H 455mm

K7120

**\$489**  
GREAT VALUE!



## KINCROME PORTABLE TOOLKIT 94 PIECE

- 19 METRIC 1/2" Drive Sockets: 8 - 32mm
- 14 METRIC Combination Spanners: 8 - 24mm

K1865



**\$2199**  
SUPER DEAL!



## KINCROME STARTER KIT 2 PIECE 7 DRAWER

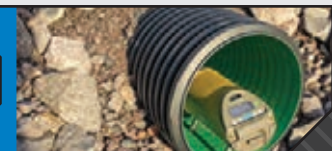
- K7366 Bench Cabinet x 1
- K7370 Workshop Bench x 1
- Measurements: 2541 x 622 x 1000mm (WxDxH)

K7372

# TOPCON TP-L6 PIPE LASER SERIES

TP-L6WB  
RED BEAM  
1034437-10

TP-L6WBG  
GREEN BEAM  
1034437-11



**WORKSHOP/WELDING**



**TRADEFLEX FITTED ASSEMBLY**

12MM X 20M  
PN. TFA1220  
**\$69<sup>95</sup>**  
GREAT VALUE!

10MMx20M  
PN. TFA1020  
**\$49<sup>95</sup>**  
GREAT VALUE!



**DIGITAL TRUCK TYRE INFLATOR/GAUGE**

PN. AIPTPGDT

**\$129<sup>00</sup>**  
GREAT VALUE!



**\$395<sup>00</sup>**  
GREAT VALUE!

**PFRH2036 ASSEMBLED ON AIPSR1840**

PN. AIPSR1836F



**\$12<sup>95</sup>**  
GREAT VALUE!

PN. AIPBG

**\$17<sup>95</sup>**  
GREAT VALUE!

W/ 300mm NOZZLE  
PN. AIPBG300



HOSE | VALVES | FITTINGS

**ACCUD**

**10MM DIAL INDICATOR**

P/N: AC-222-010-11  
Graduation: 0.01 MM  
Accuracy: 20 µm

- Supplied with Calibration Certificate



**\$74.00**  
JEWELLED BEARING!

**MAGNETIC STAND**

P/N: AC-281-060-02  
Stem hole: 4, 8mm & 3/8"  
Magnetic Force: 60 kgf

**\$69.00**  
V-BLOCK BASE!



**DIGITAL CALIPERS**



- Calibration Certificate
- USB data output
- Meet DIN862

Resolution: 0.01 MM  
Accuracy: ±0.03 MM

P/N	Size	Price
AC-111-006-12	150mm	<b>\$95</b>
AC-111-008-12	200mm	<b>\$139</b>
AC-111-012-12	300mm	<b>\$210</b>

**180° PROTRACTOR**

P/N: AC-812-005-01

Length: 150mm  
Accuracy: ±0.3°

**\$55.00**  
GREAT VALUE!



**MECHANICS CREEPER**

P/N: GCR40  
Size: 1005 x 470 x 135 MM  
Wheel Size: 75 x 25 MM  
Weight: 5.3 kg

**\$175**  
150 KG CAPACITY!



**MAGNETIC BROOM**

P/N: MB001  
Handle Length: 720-1035 MM  
Head width: 377 MM

**\$135**  
377MM HEAD!



**ST14IX**

Inverter Welder

P/N: 691141BUNDLE

**\$399.00**  
EA

BOSSWELD X series

- 140A output, 10A Plug
- Digital Display
- IGBT power technology
- MMA and DC lift TIG welder
- DC TIG Lift Arc Function
- 35/50 Dinse Connectors
- Stepless Amperage Control

Bundle Contains:

- Wide View Electronic Welding Helmet
- 16" Black & Gold Welding Gloves
- Gemini Electrodes 2kg Pack



**ST18IX**

Inverter Welder

P/N: 691181BUNDLE

**\$469.00**  
EA

BOSSWELD X series

- 180A output, 15A plug
- DC MMA and DC TIG welding
- 35/50 Dinse output connectors
- Digital LED display
- DC TIG lift arc start
- Lightweight and portable
- Stepless amperage control
- IGBT inverter technology
- Excellent arc stability

**mst188X**

Inverter Welder

P/N: 699188

**\$799.00**  
EA

BOSSWELD X series

- 180 Amp output
- MIG /Stick /TIG welder
- Fitted 10 Amp plug
- Digital LED display
- DC TIG lift arc start
- Excellent arc stability
- Gas /gasless operation
- 2T / 4T trigger latching
- Stepless amperage control
- Generator safe
- Suits D100/D200 spools
- Spool gun ready

P/N: 699188BUNDLE

**\$1059.00**  
EA

BOSSWELD X series

Bundle Contains:

- Wide View Electronic Welding Helmet (Helmet Style May Vary)
- Bossweld Welder Trolley Universal
- Gasless GS MIG Wire x 0.8mm (4.5kg)
- Mild Steel MIG Wire x 0.8mm (5kg)
- 16" Black & Gold Welding Gloves



**AC-DC 200X**

TIG Welder

P/N: 692200FOOT

**BONUS FOOT CONTROLLER**  
VALUED AT **\$240**  
SRP

**\$1399.00**  
EA

BOSSWELD X series



- 200A output, 15A plug
- AC/DC TIG welding
- High frequency arc start
- Adjustable pulse
- AC balance adjustment
- 2T / 4T trigger latching
- IGBT inverter technology
- Pre and post gas adjustment

**ELECTRONIC WELDING HELMET WIDE VIEW SERIES**

- Wide viewing area 100mm x 67mm
- Shade Adjustable from shades 9 – 13
- Grinding mode
- Switching speed 1/10000s
- Dual Sensor

**\$99.00**  
EA

BOSSWELD



CODE	DESCRIPTION
700197	BossSafe Urban Wide View Electronic Welding Helmet
700198	BossSafe Street Wide View Electronic Welding Helmet
700199	BossSafe Blaze Wide View Electronic Welding Helmet
700200	BossSafe Graphite Wide View Electronic Welding Helmet

**GASLESS GS MIG WIRE**

**GREAT VALUE!**

- E71T-GS
- Self Shielded Flux Core wire
- Suitable for Single pass applications
- Smooth Arc action DC-
- No Shielding gas required



CODE	DESCRIPTION	PRICE
200343	Bossweld Gasless GS MIG x 0.8mm (4.5 Kg SpL)	\$69.95 / SPL
200345	Bossweld Gasless GS MIG x 0.9mm (4.5 Kg SpL)	\$64.95 / SPL

**BOSSWELD**  
WELD LIKE A BOSS

**BOSSWELD.COM.AU**



**TAG US: #weldlikeaboss**



**LINE LASER SERIES II**



**LX22G**  
012-LX22G



**LX256P**  
012-LX256P



**LX30G**  
012-LX30G





Innovative Technology. Comprehensive Welding and Cutting Solutions.

**POWERCRAFT® 200M 4in1 Multi-Purpose Welder with BONUS Trolley**

- 200Amp (240V/10amp plug) 4in1 Multi-Purpose Welder
- Simple digital LCD display panel and the EZYSET™ technology
- Process capability: MIG, Synergic, Flux-cored, AC/DC TIG (Lift TIG DC and High Frequency AC/DC TIG) and Stick
- 3 year warranty
- Comes Ready-to-Weld including: MIG gun, TIG Torch, Electrode Holder, Work Clamp, cables, drive rolls and flow meter.
- BONUS POWERCRAFT® Welders Trolley

PART NUMBER: K69074-1T



**\$2,099<sup>00</sup>**  
BONUS VALUE

**BONUS!**  
Powercraft® Trolley

**POWERCRAFT® 140 Stick/Lift TIG Welder with BONUS General Purpose Electrodes 2.5mm x 1kg**

- 140Amp (240v/10amp) Stick & Lift TIG inverter.
- EZYSTRIKE™ technology which eliminates electrodes sticking
- Ready to weld – includes cables, clamp, holder and carry case.
- Perfect for general fab, maintenance/repair, workshops and home handyman.
- 3 year Warranty
- BONUS: OMNIA 46 General Purpose Electrodes 2.5mm x 1kg

PART NUMBER: K69058-1S



**\$349<sup>00</sup>**  
READY TO WELD

**BONUS!**  
General Purpose Electrodes 2.5mm x 1kg

**POWERCRAFT® T-11 Gasless Flux-Cored Wire**

- Gasless flux-cored wire - No gas required
- Perfect for use on portable MIG welding machines
- Versatile – multi-pass and all positional
- Easy to use – low spatter and easy slag removal
- Precision layer wound for smooth wire feeding
- Ideal for general fabrication, rural and DIY.

PART NUMBERS: 14-110810 (0.8MM 1KG), 14-110910 (0.9MM 1KG), 14-110845 (0.8MM 4.5KG), 14-110945 (0.9MM 4.5KG), 14-111245 (1.2MM 4.5KG)



**\$199<sup>5</sup>** EACH  
EASY TO USE

1kg

**\$649<sup>5</sup>** EACH  
VERSATILE

4.5kg

**Viking® 1740 Auto-Darkening Helmet Value Range**

- Best optical clarity (1/1/1/1) available helmet lens.
- Generous full colour 96 x 43mm viewing area in true colour
- Sensitivity, delay control and grind mode.
- Weighs only 528 grams.
- 2 year warranty

PART NUMBERS: K3282-3 (BLACK), K3495-3 (RECODE), K4375-3 (IGNITION)



**\$149<sup>00</sup>** EACH  
SAFETY FIRST

www.lincolnelectric.com.au

**210MST ITALY**  
MIG/Stick/TIG Welder

- 210A max MIG output
- 2-in-1 10A or 15A plug
- Synergic or manual MIG controls
- Takes 1kg or 5kg spools
- 10A plug
- MIG torch H/Duty 4m
- Earth lead 3m

**\$2099<sup>00</sup>** (incl. GST)

WC-210MST



**41PA ITALY**  
Plasma Cutter

- Built-in Air compressor
- Clean Cut up to 12mm mild steel, 12mm stainless-steel & 10mm aluminium
- 40A max output
- Fitted with 15A 240V plug
- Rugged roll-frame design
- Only 16kg

**\$2499<sup>00</sup>** (incl. GST)

WC-41PA



**Weldforce 200MST**  
MIG/Stick/TIG Welder

- 200A max MIG output @ 25% duty cycle
- Weld up to 10mm Mild Steel (max MIG capacity)
- Fitted with 15A 240V plug
- Takes 5kg or 15kg spools

**\$999<sup>00</sup>** (incl. GST)

WF-06129



**Weldforce 180MST**  
MIG/Stick/TIG Welder

- 180A max MIG output @ 10% duty cycle
- Weld up to 8mm Mild Steel (max MIG capacity)
- Fitted with 15A 240V plug
- Takes 1kg or 5kg spools

**\$749<sup>00</sup>** (incl. GST)

WF-06128



**Promax Blue FR**  
Leather Sleeves Jacket



**\$119<sup>00</sup>** (incl. GST)

WC-04653 (M)  
WC-04658 (L)  
WC-04655 (XL)  
WC-04656 (2XL)  
WC-04657 (3XL)



**Promax 200**  
'Slate' Welding Helmet



AFFORDABLE, RELIABLE & GREAT VALUE!

- Ideal for MIG & Stick welding
- Magnification lens holder
- Viewing area: 96 x 39mm

**\$95<sup>00</sup>**

WC-05311



**Promax 180**  
'Black' Welding Helmet



LIGHTWEIGHT & COMFORTABLE!

- Exceptional value
- Ideal for Occasional MIG & Stick Welding
- Magnification lens holder

**\$75<sup>00</sup>**

WC-05164



**Platinum GL-11**  
Gasless Wire 0.9mm | 4.5kg



AUSTRALIA'S NUMBER 1 GASLESS WIRE!

- Ultra-smooth arc with minimal spatter
- Suitable for All-positional single and multi-pass welds

**\$95<sup>00</sup>**

2-098FM



**Platinum TIG Gloves**



- Ideal for TIG welding & Plasma cutting

**\$21<sup>95</sup>**

WC-04676

**Promax Blue Gloves**



- Ideal for MIG & Stick welding

**\$11<sup>95</sup>**

WC-01775

All prices include GST. All specifications and prices are subject to change at any time without notice. E.&O.E.



PRO SERIES SPIRIT LEVELS



EL60

002-EL60



EL120

002-EL120

# MATERIALS HANDLING

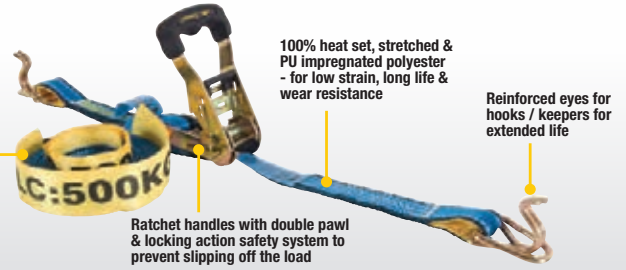


## BEAVER MULTIPURPOSE HAND RATCHET & STRAP

- Low strain & long life
- Durability demanded in flatbed tiedown situations

CODE	SIZE	INC. GST
RTD055PL	50mm x 9m, LC 2500kg	\$23.95
349035RB	35mm x 6m, LC 1500kg, c/w hook & keeper	\$22.95
349025RB	25mm x 5m, LC 500kg	\$21.95
349025RSB	25mm x 4m, LC 450kg, c/w S Hooks	\$17.95

Each Beaver Ratchet Assembly is provided with 2 protective sleeves



## BEAVER 3S LEVER BLOCK

- Heavy duty
- High quality Grade 80 chain, with guides to stop load jumping
- Gears fitted with industrial roller bearings



CODE	SIZE	INC. GST
506025	250kg x 1.5m Aluminium Gunmetal	\$159.00
506050	500kg x 1.5m Aluminium Gunmetal	\$229.00
506080	800kg x 1.5m White	\$249.00
506160	1.6t x 1.5m Violet	\$320.00



## BEAVER 3S CHAIN BLOCK

- Heavy duty steel casing
- High quality Grade 80 chain & superior braking system
- Gears fitted with industrial roller bearings



CODE	SIZE	INC. GST
503025	250kg x 1.5m Grey	\$189.00
503103	1000kg x 3m Violet	\$209.00
503203	2000kg x 3m Green	\$329.00



## BEAVER FLAT LIFTING SLING

- High strength, yet low weight
- Provides a non-damaging lift
- Low stretch to prevent load bounce
- Manufactured to AS 1353.1

CODE	SIZE	INC. GST
FS-2-1000X1	1000kg x 1m	\$5.95
FS-2-1000X2	1000kg x 2m	\$10.95
FS-2-1000X3	1000kg x 3m	\$16.95
FS-2-1000X4	1000kg x 4m	\$20.95
FS-2-2000X1	2000kg x 1m	\$11.95
FS-2-2000X2	2000kg x 2m	\$13.95
FS-2-2000X3	2000kg x 3m	\$27.95
FS-2-2000X4	2000kg x 4m	\$39.95
FS-2-3000X1	3000kg x 1m	\$21.95
FS-2-3000X2	3000kg x 2m	\$34.95
FS-2-3000X3	3000kg x 3m	\$39.95
FS-2-3000X4	3000kg x 4m	\$57.95



## BEAVER OBLONG LINKS

- Made to AS 3776
- Heat treated alloy steel



CODE	SIZE	INC. GST
883508A	8mm	\$13.95
883510A	10mm	\$18.95
883513A	13mm	\$24.95

## BEAVER CONNECTORS

- Made to AS 3776
- Heat treated alloy steel



CODE	SIZE	INC. GST
C7-8	8mm	\$13.95
C10	10mm	\$16.95

## BEAVER ROUND LIFTING SLING

- High strength, yet low weight
- Flexible in many directions
- Low stretch to prevent load bounce
- Manufactured to AS 4497.1

CODE	SIZE	INC. GST
MRS1000X1	1000kg x 1m	\$6.95
MRS1000X2	1000kg x 2m	\$14.95
MRS1000X3	1000kg x 3m	\$19.95
MRS1000X4	1000kg x 4m	\$25.95
MRS2000X1	2000kg x 1m	\$12.95
MRS2000X2	2000kg x 2m	\$19.95
MRS2000X3	2000kg x 3m	\$29.95
MRS2000X4	2000kg x 4m	\$38.95
MRS3000X1	3000kg x 1m	\$16.95
MRS3000X2	3000kg x 2m	\$28.95
MRS3000X3	3000kg x 3m	\$41.95
MRS3000X4	3000kg x 4m	\$54.95



## BEAVER G80 CLEVIS GRAB HOOKS

- Made to AS 3776
- Heat treated alloy steel



CODE	SIZE	INC. GST
886207	7-8mm	\$8.95
886210	10mm	\$21.95
886213	13mm	\$41.95

## BEAVER G80 EYE GRAB HOOKS

- Made to AS 3776
- Heat treated alloy steel



CODE	SIZE	INC. GST
885307	7-8mm	\$17.95
885310	10mm	\$25.95

## BEAVER G80 CLEVIS SLING HOOKS WITH CATCH

- Made to AS 3776
- Heat treated alloy steel



CODE	SIZE	INC. GST
885107	7-8mm	\$17.95
885110	10mm	\$31.95
885113	13mm	\$57.95

## BEAVER G80 SAFETY SLING EYE HOOKS

- Made to AS 3776
- Heat treated alloy steel



CODE	SIZE	INC. GST
885807	8mm	\$13.95
885810	10mm	\$32.95
885813	13mm	\$61.95

## BEAVER G80 SWIVEL EYE HOOKS WITH CATCH

- Made to AS 3776
- Heat treated alloy steel



CODE	SIZE	INC. GST
885407	7-8mm	\$57.95
885410	10mm	\$79.00

## BEAVER G100 WELD-ON RINGS

- For lifting & lashing applications



CODE	SIZE	INC. GST
BALPV015	1.5t	\$29.95
BALPV025	2.5t	\$41.95
BALPV040	4.0t	\$44.95

## BEAVER SELF LOCKING CLEVIS HOOKS

- Made to AS 3776
- Heat treated alloy steel



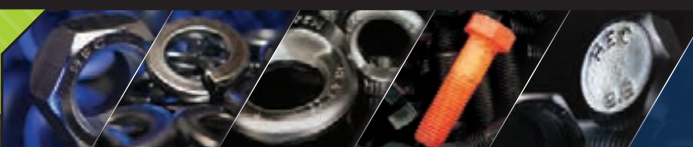
CODE	SIZE	INC. GST
886407Y	7-8mm	\$52.95
886410Y	10mm	\$75.95
886413Y	13mm	\$139.00

## BEAVER G80 SELF LOCKING EYE HOOKS

- Made to AS 3776
- Heat treated alloy steel



CODE	SIZE	INC. GST
885707Y	7-8mm	\$57.95
885710Y	10mm	\$85.00
885713Y	13mm	\$129.00



Quality Fasteners Since 1935

hobson.com.au



# HAND PROTECTION



# SAFETY EYEWEAR



## NINJA MAXIM COOL GLOVE

Code: NIMXCLNFTGY

- Soft, textured NFT™ coating
- Colour: Grey
- Sizes S – 2XL



**\$5.95**  
GREAT VALUE

## NINJA MAXIM C5 GLOVES

Code: NIMAXIMC5BL

- Re-enforcement between thumb and fore finger for durability
- Lightweight liner and coating for maximum comfort and cut resistance
- Sizes S – 2XL



**\$14.95**  
GREAT VALUE

## FRONTIER VISION X SAFETY GLASSES

ANTI-FOG LENS

- Tough polycarbonate frame with anti-scratch lenses for 99.9% UV protection
- Moulded nose bridge
- Ultra lightweight for increased comfort

☐ Clear Code: FRVISXSPCCR0000

■ Smoke Code: FRVISXSPCSM0000



**\$3.95**  
GREAT VALUE

# PREMIUM FOOTWEAR



## MACK TRADESMAN LACE UP SAFETY BOOTS

Code: MKOTRADESBBF

- This lace up safety boot provides additional ankle stability at an attractive price point
- Available in Black



**SIZES 4-16**  
HALF SIZES 5.5-11.5

### SAFETY FEATURES



**\$89.00**  
HOT BUY

# SAFETY PPE



## KWIKMASTER KM60 & KM80 INDUSTRIAL WIPERS

- Available in General Purpose and Heavy Duty
- Excellent water and oil absorbency
- High strength, performance and durability
- Cost effective - rinseable and reusable disposable wipers



CODE	DESCRIPTION	INC. GST
KM60WIPERWW0130	KM60 General Purpose Industrial Wipers - Pop Up Box 130 Sheets	\$19.95
KM80WIPERWW0150	KM80 Heavy Duty Industrial Wipers - Dual Pop Up Box 150 Sheets	\$47.95
KM80WIPERWW0540	KM80 Heavy Duty Industrial Wipers - Roll 540 Sheets	\$129.00

# HEAD PROTECTION



## FRONTIER VENTED HARD HAT WHITE

- Vented for breathability and comfort
- Adjustable 6 point webbed harness for comfort and fit
- Rain guard with reinforced peak
- Also available with a ratchet harness to allow quick, easy and precise single hand adjustment whilst wearing the hat.

VENTED



CODE	DESCRIPTION	INC. GST
FRTG57VTDWW0000	Vented	\$14.95
FRTG57VRHW0000	Vented with Ratchet	\$16.95

# SUN PROTECTION



## CANCER COUNCIL SPF50+ SUNSCREEN

- 4 hours water resistant
- Dry touch
- UVA - UVB Broad spectrum protection

4HR WATER RESISTANT



CODE	SIZE	INC. GST
SS-050-AC-50P	50ml Ezi Clip	\$12.95
SS-001-WK-50P	1L Pump Pack	\$49.95



# SECURE LIFTING



- Lifting Eyes
- Swivel Eye Bolts
- Bow Shackles
- Weld On Lifting Points

Test Certificates available at: [hobson.com.au](http://hobson.com.au)

# FOLLOW US ON FACEBOOK

FACEBOOK.COM/TRADESMARTINDUSTRIAL

**SAEFTY**



PROTECTIVE INDUSTRIAL PRODUCTS

**\$5<sup>95</sup>**  
GREAT DEAL!



**\$4<sup>95</sup>**  
GREAT DEAL!



**34-323-(SIZE)**

**G-TEK® SUPERSKIN**

- Abrasion and tear resistant to a higher level than traditional leather gloves.
- Seamless knit 15 gauge polyamide/spandex liner offers a precise fit for every hand. Movement activated technology allows the glove to mould to your individual hand shape, providing an un-restricted "second skin" fit and feel.
- Breathable micro-porous nitrile coated palm and fingers for exceptional tactile sensitivity and maximum dexterity. Anti-microbial infusion with high water vapour transmission keeps hands cool and hygienically dry.
- Sizes: 7-11

**33-VRX180-(SIZE)**

**G-TEK® VR-X 180 GENERAL PURPOSE**

- 18 gauge ultra-thin knit liner provides absolute perfect fit and control at the finger tips. The combination of strength, durability and ultimate dexterity provides a better solution to the traditional nitrile disposable use.
- World first single layer polyurethane coating inclusive of VRX "Advanced Barrier" Technology to render inactive the spread of virus and bacteria.
- Touch screen compatible to allow the user to operate a device without removing gloves.
- Sizes: XS-2XL

**\$21<sup>95</sup>**  
GREAT DEAL!



**\$69<sup>95</sup>**  
GREAT DEAL!



**16-377-(SIZE)**

**G-TEK® POLYKOR® X7™ PLATINUM F+**

- G-Tek® PolyKor® X7™ Platinum F+ gloves designed for high cut hazard risks.
- PolyKor® blended 18 gauge shell with X7™ technology offers very high cut resistance, dexterity and durability with ultra fine liners.
- NeoFoam® coated palm and fingertips offers great abrasion resistance and outstanding wet/dry grip.
- Touch screen compatible to allow the user to operate a touch screen phone or device without removing gloves.
- Sizes: 7-11

**EIMP-VIB-(SIZE)**

**EUREKA IMPACT VIBRATION**

- Eureka Impact Vibration gloves designed to reduce vibration transmission at medium to high speed rotations above +350Hz (+21,000 R.P.M). Tested according to ISO 10819:2013 TRM = 0.68, TRH = 0.47.
- EN388:2016 Cut Rating C.
- Unique Supra Block vibration foam in palm and fingers offers protection from continued exposure to vibrating equipment.
- Sizes: XS-3XL

**\$34<sup>95</sup>**  
GREAT DEAL!



**\$34<sup>95</sup>**  
GREAT DEAL!



**GNSBDNS(SIZE)**

**GRIPPAZ™ SKINS BLACK**

- Grippaz™ Skins patented design on the inside and outside of the glove provides extra traction with oily or wet parts.
- 6 mil proprietary nitrile blend with patented fish scale pattern is more tear-resistant and puncture-resistant than conventional single-use disposable gloves - for prolonged use and reduced waste.
- ESD safe, surface resistance per ASTM D257, static dissipative range at 10<sup>8</sup> ohms, 12% RH, 48hrs @ 100 Volts.
- Touchscreen compatible to allow the user to operate a touch screen phone or device without removing gloves.
- Sizes: S-2XL

**GNSODNS(SIZE)**

**GRIPPAZ™ SKINS ORANGE**

- Grippaz™ Skins patented design on the inside and outside of the glove provides extra traction with oily or wet parts.
- 6 mil proprietary nitrile blend with patented fish scale pattern is more tear-resistant and puncture-resistant than conventional single-use disposable gloves - for prolonged use and reduced waste.
- ESD safe, surface resistance per ASTM D257, static dissipative range at 10<sup>8</sup> ohms, 12% RH, 48hrs @ 100 Volts.
- Touchscreen compatible to allow the user to operate a touch screen phone or device without removing gloves.
- Sizes: S-2XL



# HOT DEALS STORE WIDE

## SAFETY/LADDERS

### BAILEY AUSTRALIA'S #1 LADDER BRAND

#### TRADE DOUBLE SIDED STEPLADDER

INDUSTRIAL 150KG



**FS13428**  
Bailey Trade 150kg  
Double Sided 3 -  
0.9m

**\$139**  
GREAT VALUE!  
9312097055629



**FS13429**  
Bailey Trade 150kg  
Double Sided 4 -  
1.2m

**\$199**  
GREAT VALUE!  
9312097055636



**FS13430**  
Bailey Trade 150kg  
Double Sided 6 -  
1.8m

**\$329**  
GREAT VALUE!  
9312097055643

#### 3 IN 1 LADDERS

INDUSTRIAL 150KG



**FS13862**  
Bailey SLS 3-IN-1  
Ladder 150kg 6 -  
1.8m

**\$289**  
GREAT VALUE!  
9312097062979

**SLS BAILEY LADDERS**  
THE SLS-STEP/ LEANING/ STRAIGHT

#### BXS 20 MULTI-PURPOSE LADDERS

INDUSTRIAL 135KG



**FS13644**  
Bailey BXS20  
135kg

**\$379**  
GREAT VALUE!  
9312097060005

#### PRO PUNCHLOCK® SINGLE SIDED LEANING STEPLADDER

INDUSTRIAL 150KG



**FS13957**  
Bailey Pro  
Leansafe 6 150kg  
Single Sided  
Ladder

**\$329**  
GREAT VALUE!  
9312097064805

**LEANSAFE**

baileyladders.com.au  
©2022 WernerCo. DOC22.0031



**Black Knight Gripmaster Coated Glove**  
PN. GNN192

Sizes: XS, S, M, L, XL, 2XL & 3XL

**\$3<sup>95</sup>**

GREAT VALUE!



**\$12<sup>95</sup>**

GREAT VALUE!

**Fireforce Extended Cuff Rigger Glove - Kevlar Stitched**  
PN. GRE243

Sizes: S, M, L, XL & 2XL

**Blue Flame Premium Welders Gauntlet - Kevlar Stitched, Reinforced Palm**  
PN. GWB163



**\$11<sup>95</sup>**

GREAT VALUE!



**\$7<sup>95</sup>**

GREAT VALUE!

**Maxisafe White Laminated Coverall, breathable, water repellent**  
PN. COT619

Sizes: M, L, XL, 2XL, 3XL, 4XL & 5XL

**\$69<sup>00</sup>**

GREAT VALUE!

**MaxiGuard Half Mask Respirator General Purpose P3 Kit**  
PN. R7500GK-M - Medium  
PN. R7500GK-L - Large

**\$75<sup>00</sup>**

GREAT VALUE!

**MaxiGuard Half Mask Respirator Painters Kit with A1P3 Filters**  
PN. R7500PK-M - Medium  
PN. R7500PK-L - Large

**\$79<sup>00</sup>**

GREAT VALUE!

**MaxiGuard Half Mask Respirator Chemical Kit with ABEK3 Filters**  
PN. R7500CK-M - Medium  
PN. R7500CK-L - Large

**maxisafe**  
safety products

FREIGHT CHARGES MAY APPLY



# FOLLOW US ON FACEBOOK

[FACEBOOK.COM/TRADESMARTINDUSTRIAL](https://www.facebook.com/TRADESMARTINDUSTRIAL)

## MATERIALS HANDLING

**R RICHMOND**  
WHEEL & CASTOR CO  
ROLLING SOLUTIONS

**YOUR NUMBER ONE CHOICE FOR WHEELS, CASTORS, AND MORE!**

### FOLDING PLATFORM TROLLEYS



- 300kg safe working load
- 900mm x 610mm

**\$165** INC GST  
P/N: PFR025

**\$115** INC GST  
P/N: PFR024

- 200kg safe working load
- 740mm x 468mm

### KARTR FOLDING TROLLEY WITH BASKET



- 90kg load capacity
- 1000(L) x 600(W) x 1070mm(H)

**\$269** INC GST  
P/N: KAR001

### 400MM STEEL CENTRED PNEUMATIC WHEEL



- 200kg load capacity
- 1" Axle Diameter

**\$75** INC GST  
P/N: PN1608-1

### PIANO DOLLY



- 740mm x 380mm x 300mm
- 250kg safe working load
- 10" Pneumatic Wheels
- 260mm wheel size

**\$155** INC GST  
P/N: PDR100

### MIGHTY TOUGH TROLLEYS

#### Puncture Proof Hand Trolley

- 200kg load capacity
- 1180mm x 370mm trolley size



**\$229** INC GST  
P/N: MTR100

#### Pneumatic Hand Trolley

- 200kg load capacity
- 1180mm x 370mm trolley size

**\$219** INC GST  
P/N: MTR101



### GAS BOTTLE TROLLEYS

#### Pneumatic Trolley

- 200kg load capacity
- Holds up to 2 x G Size Gas Cylinders

**\$239** INC GST  
P/N: GBR002



#### Puncture Proof Trolley

- 200kg load capacity
- Holds up to 2 x G Size Gas Cylinders

**\$269** INC GST  
P/N: GBR003





# SUPER SAVINGS!

MATERIALS HANDLING/HEATING

**R RICHMOND**  
WHEEL & CASTOR CO  
ROLLING SOLUTIONS

**YOUR NUMBER ONE CHOICE FOR  
WHEELS, CASTORS, AND MORE!**

## STACK & NEST CRATES

- High Grade Recycled Polypropylene
- Available in: 32L, 52L & 68L



Product Description	Product Code	Price (INC. GST)
32L Stack & Nest Crates	SNR004RWCBLK	\$18.95
52L Stack & Nest Crates	SNR001RWCBLK	\$21.95
68L Stack & Nest Crates	SNR009RWCBLK	\$31.95

## ALUMINIUM COMPACT STEP LADDERS

- 150kg load capacity
- 3 models available: 2-step, 3-step & 4-step stair ladders
- Compact folding design for easy storage



Product Description	Product Code	Ladder Height	Price (INC. GST)
2 Step Ladder	CSL200	810mm	\$219
3 Step Ladder	CSL300	1275mm	\$339
4 Step Ladder	CSL400	1500mm	\$449

## SAFETY STEPS

- Dimensions: 505 x 505 x 365mm
- Safe working load: 250kg
- Weight: 3.5kg



**\$75** INC GST  
P/N: SSR002

# LAVOR

SIMPLY STRONGER

COLD WATER  
PRESSURE  
CLEANER



### VERTIGO28

- 2610 PSI Operating pressure
- 8.5LPM flowrate
- Induction motor 2400W
- 10 mt. nylon reinforced HP hose
- Turbo nozzle plus 4 QR nozzles
- Onboard detergent tank

P/N: 8.047.0063

**\$659**

POWER CLEAN!

TradeSmart  
MATES RATES!

FAN FORCED

### FF175

- Diesel heater
- 175,000 BTU (51.3KW) of heat
- Heating area 400sqm
- Fuel tank 49 litres
- Operating hours 10hrs
- Thermostat controlled

P/N: 8.700.0005



**\$849**

SUPER SPECIAL!

PICTURED  
WITH OPTIONAL TROLLEY:  
\$129  
P/N: PT70TWK



### PT70SS PLUS

- Available with optional Trolley
- Radiant diesel heater (21KW, 70000 BTU)
- Heating area capacity 200m2 (approx.)
- Fuel tank capacity 15 litres
- Non continuous spark for extremely quiet operation
- Diesel consumption 1.9 lt./h (7hrs)
- Thermostat control for maximum efficiency

P/N: 8.700.0001

**\$849**

GREAT COMBO!

FAN FORCED

### FF70

- Diesel Forced Air Heater
- 70,000 BTU
- Heating Area 158sqm
- Weight 12 Kgs
- Fuel tank 19 litres
- Operating Hours 9hrs
- Thermostat controlled

P/N: 8.700.0003



**\$499**

RED HOT DEAL!

FREIGHT CHARGES MAY APPLY





# WHEN HEAVY DUTY MATTERS!

## HEATING/WALL EXHAUST FAN



# FANMASTER

COOLING HEATING VENTILATION EXTRACTION

### INDUSTRIAL LPG HEATER 20KW

IGH2-20



**\$349**  
GREAT VALUE!

- 20kW 240v 3 Pin 10A Plug
- Capable of heating up to 200m<sup>2</sup>
- Low Gas Consumption
- Comes with hose & regulator

### INDIRECT FIRED DIESEL FAN HEATERS

- 240V 3 Pin 10A Plug
- Diesel or Kerosene
- Airflow 166L/s (20kW)  
555L/s (50kW)
- Capable of heating up to 200m<sup>2</sup> (20kW)



PRICED FROM...  
**\$899**

IDH2-20IN

PART NO.	DESC.	PRICE INC GST
IDH2-20IN	20KW	\$899.00
IDH2-50IN	50KW	\$2,099.00

### LOUVRED WALL EXHAUST FANS



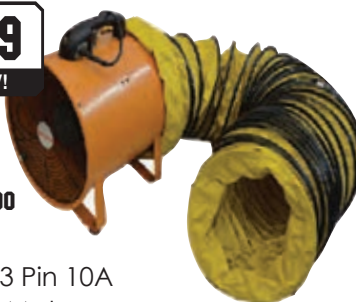
PRICED FROM...  
**\$169**

- 240V Hardwired
- Gravity louvres to stop rain & reverse airflow
- Perfect for workshops & garages

PART NO.	DESC.	AIRFLOW	PRICE INC GST
IWEL300	300MM	300L/S	\$169.00
IWEL350	350MM	630L/S	\$189.00
IWEL400	400MM	800L/S	\$229.00

### PORTABLE VENTILATOR WITH 5M DUCTING

**\$299**  
HOT BUY!



MPVIFD300

- 240V 3 Pin 10A
- 520W Motor
- Exhaust or supply at a rate of up to 1083 L/S
- 5m ducting can concertina for ease of storage

### INDUSTRIAL WALL LOUVRED FAN

IWLF6-11-6



**\$1199**  
GREAT VALUE!

- 240V Hardwired
- Airflow 5000L/s
- Internal gravity louvres
- Exhaust or supplies air
- Featuring a galvanised steel body with rain cover

### INDUSTRIAL ROOF EXHAUST FAN



PRICED FROM...  
**\$1299**

- 415V Hardwired
- Steel base & body
- Weather tight hood

PART NO.	DESC.	AIRFLOW	PRICE EX GST	PRICE INC GST
IHR4-550-4-3	400MM	1472L/S	\$1,180.91	\$1,299.00
IHR6-11-6-3	600MM	3600L/S	\$1,635.45	\$1,799.00
IHR8-22-6-3	800MM	7778L/S	\$2,544.55	\$2,799.00

### INDUSTRIAL GALVANISED LOUVRED FAN



PRICED FROM...  
**\$1499**

- 415V Hardwired
- Extracts large volumes of air
- Louvres stop reverse air flow
- Ideal for large sheds, factories & warehouses

PART NO.	DESC.	AIRFLOW	PRICE INC GST
IGLF950	950MM	9000L/S	\$1,499.00
IGLF1250	1250MM	12500L/S	\$1,999.00

### INDUSTRIAL PORTABLE FUME COLLECTORS

DID YOU KNOW

Welding fumes – fine metal particles produced through welding that can be breathed in – have been classified as carcinogenic. This means employers in mining and other industries where welding takes place must make sure workers are protected, for example by installing welding fume extractors.



PRICED FROM...  
**\$4199**

- HEPA Filters
- Fume arm 360° rotation
- Portable with castors & brake function
- Purification of welding & grinding fumes & dust

PART NO.	MOTOR	VOLTAGE	PLUG	PRICE INC GST
IPFC-075	0.75KW	220~240V/50HZ	3 PIN 10A	\$4,199.00
IPFC-15	1.5KW	415V/50HZ	4 PIN 10A	\$8,099.00
IPFC-30	3.0KW	415V/50HZ	4 PIN 20A	\$9,999.00



# SPRING SAVINGS

## COMPRESSORS

### MILLAN

**Air Compressors Since 1954**



**240 VOLT**

Powered By **HONDA**



**AFP38**

**\$2899**

**AIR COMPRESSOR HONDA ENGINE**

- Honda 6.5HP engine
- 518 LT/min Displacement
- 400 LT/min F.A.D.
- Auto Idle control
- 60 Lt tank
- 10" Pneumatic wheels
- Removable handle



**AFG60**

**\$4299**

**AIR COMPRESSOR HIGH PRESSURE**

- 826 Lt/min Displacement
- 659 Lt/min F.A.D.
- 2-Stage ABAC pump
- 5.5kW / 7.5HP TECO motor
- 415V
- 155 litre tank, forklift feet

**TECO**

**C22**

**\$3399**

**AIR COMPRESSOR 240 VOLT**

- 668 Lt/min Displacement
- 461 Lt/min F.A.D.
- 2 Cylinder cast-iron pump
- 4.0kW / 5.0HP motor
- 240V, 20Amp
- 155 litre tank
- (High pressure version also available)



**C12**

**\$1399**

**AIR COMPRESSOR TECO MOTOR**

- Filter / regulator
- 348 Lt/min Displacement
- 238 Lt/min F.A.D.
- 2 Cylinder cast-iron pump
- 1.65kW / 2.2HP TECO motor
- 240V, 10Amp
- 60 litre tank

**TECO**

**C16**

**\$1749**

**AIR COMPRESSOR TECO MOTOR**

- Filter / regulator
- 453 Lt/min Displacement
- 328 Lt/min F.A.D.
- 3 Cylinder cast-iron pump
- 2.2kW / 3.0HP TECO motor
- 240V, 15Amp
- 60 litre tank



**\$419<sup>00</sup>**  
**PB2500**

**Peerless Black 2500 Direct Drive**

- Free Air Delivery: 154 LPM
- 2.5HP Electric motor - 10AMP
- 30 Litre Air Receiver • Max PSI: 145
- Warranty: 1 year total unit



**\$1099<sup>00</sup>**  
**PB14000**

**Peerless Black 14000**

- Free Air Delivery: 220 LPM
- 2.5HP Electric motor - 10AMP
- 50 Litre Air Receiver • Max PSI: 145
- Warranty: 1 year total unit



**\$2235<sup>00</sup>**  
**00100**

**PHP15 High Pressure**

- Free Air Delivery: 300 LPM @ 150PSI
- 3.5HP Electric motor - 15AMP
- 55 Litre Air Receiver • Max PSI: 175
- Warranty: 5 year pump



**\$2199<sup>00</sup>**  
**PB17000P**

**Peerless Black 17000 Petrol**

- Free Air Delivery: 320 LPM
- Genuine Honda Petrol Motor
- 50 Litre Air Receiver • Max PSI: 145
- Warranty: 3 year Honda warranty



**\$5995<sup>00</sup>**  
**PS3/8**

**Peerless 3HP Oil-injected Scroll Compressor**

- Free Air Delivery @ 116PSI: 320LPM
- 3HP Single Phase motor - 15AMP
- 110L Air Receiver
- 99% Duty Cycle
- Warranty: 1 year full industrial warranty

FREIGHT CHARGES MAY APPLY







"Alemlube **keeps you moving forward**"

**INDUSTRIAL  
STRENGTH  
EQUIPMENT**



- 660AN TRIGGER ACTION GREASE GUN**
- 450g capacity
  - Delivers up to 1.6g of grease per stroke
  - Grease pressures of up to 8,500psi (586bar)
  - Suitable for all grease grades up to NLGI3
  - 4 jaw coupler & rigid extension
  - Lightweight, durable and compact aluminium die cast head assembly
  - High volume / high pressure option facilitates fast and efficient greasing
  - The ultimate greasing tool
  - Manufactured in Germany

**\$149.00**  
GREAT VALUE!



- G100120 ALEMLUBE EL SERIES 20KG GREASE PUMP**
- Delivers up to 600g/min
  - Maximum fluid pressure of 5,800psi (400bar)
  - All types of grease up to NLGI2
  - 4m long hose assembly
  - Tested to up to 24,000kg
  - Air consumption of 3.6cfm at 150psi
  - Air inlet pressure from 70psi (5bar) to 150psi (10bar)

**\$885.00**  
GREAT VALUE!



- 424150 SAMOA 20KG GREASE KIT WITH TROLLEY**
- High pressure 55:1 ratio pump
  - Up to 7,950psi (548bar) grease pressure
  - The heavy duty air motor is free of external plastic components
  - Built in filter protects against pump tube contamination
  - Ideal for busy workshops where greasing is undertaken all day, every day
  - Drum not included



**\$1,499.00**  
GREAT VALUE!

**ALEMLUBE GREASE NIPPLE ASSORTMENT KITS**

PRODUCT NUMBER	DESCRIPTION	\$
L4674	120 piece Agricultural Grease Nipple Assortment Kit	105.00
L4675	101 piece Industrial Grease Nipple Assortment Kit	99.00
L4676	100 piece Metric Grease Nipple Assortment Kit	95.00



- 407010N2 IN LINE ELECTRONIC DIESEL FUEL METER**
- Accurate between flow rates of 7L/min & 120L/min
  - Accurate to ±1.0%
  - Field calibration is possible
  - 1" BSP inlet and outlet ports
  - Maximum operating pressure of 290psi (20 bar)
  - Flow rate analysis function

**\$439.00**  
GREAT VALUE!



- FA2 FUEL TANK FILTER**
- 1" BSP(f) inlet/outlet
  - Fuel filter suitable for use with gravity feed fuel tanks and with hand, air or electric drum pumps
  - Features a 10 micron fuel filter element, a drain cock and a replaceable clear plastic bowl

**\$179.00**  
GREAT VALUE!

**10028 HEAVY DUTY 20L GEAR OIL DRUM PUMP**



- Heavy duty fully serviceable drum pump delivers 170mL on the downstroke
- Height adjustable bung adaptor & two extra adaptors to suit local and international 20L drums supplied standard
- 1.8m long rubber assembly ensures a long service life
- Ideal for use with engine, hydraulic, gear, diff & synthetic oils

**\$155.00**  
GREAT VALUE!



**505224N SAMOA 3/4" SPRING REWIND FUEL, OIL, AIR & WATER HOSE REEL**

- Heavy duty full metal double pedestal construction
- Hose capacity: 15m x 19mm ID
- Hose pressure rating 1,520psi (105bar)
- 3/4" BSP(f) inlet/outlet
- True 3/4" full flow shaft & ports



**\$2,599.00**  
GREAT VALUE!

**CR30050 ALEMLUBE EL SERIES ELECTRIC CABLE REEL**

- 240V, maximum 10amp
- Supplied with 20m of 3 x 1.5mm2 cable
- Maximum power when coiled is 1,000W, when uncoiled 2,000W

**\$375.00**  
GREAT VALUE!

- CR30060**
- 240V, maximum 15amp
  - Supplied with 20m of 3 x 2.5mm2 cable
  - Maximum power when coiled is 1,600W, when uncoiled 3,200W

**\$425.00**  
GREAT VALUE!



\*Applies to the vast majority of Alemlube products unless indicated otherwise

**Ultraloc Range**

Ultraloc – For every industrial maintenance, repair and overhaul challenge. Ultraloc has the right solution.



**ULTRALOC**

AUSTRALIAN LEADER IN INDUSTRIAL AND AUTOMOTIVE LUBRICANTS SINCE 1986

molytec.com.au



# QUALITY YOU CAN TRUST

## FLEXIGUN®

**\$129<sup>00</sup>**  
GREAT VALUE!

**10 YEARS**  
MACNAUGHT WARRANTY\*

### K29 FLEXIGUN® - 450G HAND OPERATED GREASE GUN

**K29-01**

- Delivery pressure up to 68,900kPa (10,000psi)
- Flexible 300mm (12") high pressure extension hose and KY Supergrip 3 jaw high pressure coupler
- Up to 0.68g per shot
- Maximum viscosity - up to NLGI 2
- Suitable for either Cartridge or Bulk Fill



## LEVERGUN®

**\$115<sup>00</sup>**  
GREAT VALUE!

**10 YEARS**  
MACNAUGHT WARRANTY\*

### LEVERGUN® 450G GREASE GUN

**K45-01**

- Delivery pressure up to 82,750kPa (12,000psi)
- Rigid 150mm (6") steel extension
- KY SUPERGRIP™ 3 jaw high pressure coupler
- Up to 1.5g per shot
- Maximum viscosity - Up to NLGI 2
- Suitable for either Cartridge or Bulk fill.



## POWERLUBE®

**10 YEARS**  
MACNAUGHT WARRANTY\*



**\$1,299<sup>00</sup>**  
GREAT VALUE!

### P3 POWERLUBE™ 20KG GREASE KIT

**P3-01C**

- P3001 (50:1) Air-operated grease pump
- Maximum pump output pressure: 51,700kPa (7,500psi)
- Maximum gun output pressure: 68,900kPa (10,000psi)
- Compatible with 20kg (or similar size) pails
- Supplied with lid, follower 4m high pressure grease hose and B2 grease gun and ZSB grease swivel.
- Grease viscosity up to NLGI No.2



**\$299<sup>00</sup>**  
GREAT VALUE!

**10 YEARS**  
MACNAUGHT WARRANTY\*

### ROTARY VANE PUMP - 60/205LTR RVP-01

- Suitable for 60L - 205L drums
- Delivers up to 20L/min in both directions
- 1.8m PVC / Nitrile delivery hose
- Suitable for use with diesel, kerosene & lubricating oils up to SAE 90



## ULTIMATE IN FLEXIBILITY. MAXIMUM IN DURABILITY.

**\$345<sup>00</sup>**  
GREAT VALUE!

### RETRACTA R3 20M X 3/8" PREMIUM RETRACTABLE AIR REEL

**AR320B-01**

- Hose Size - 3/8"x 20m
- Hose Type - Compressed Air
- Inlet/Outlet - 3/8"/1/4" BSP
- Pressure Rating - 275 psi
- Hose Material - Rubberised reinforced PVC

**\$379<sup>00</sup>**  
GREAT VALUE!

### RETRACTA R3 20M X 1/2" PREMIUM RETRACTABLE AIR REEL

**AR420B-01**

- Hose Size - 1/2"x 20m
- Hose Type - Compressed Air
- Inlet/Outlet - 3/8"/3/8" BSP
- Pressure Rating - 275 psi
- Hose Material - Rubberised reinforced PVC



**10 YEARS**  
MACNAUGHT WARRANTY\*

**RETRACTA®**  
by macnaught

**\$295<sup>00</sup>**  
GREAT VALUE!

**10 YEARS**  
MACNAUGHT WARRANTY\*

### 20 LITRE HAND SPRING PUMP ASSY S20H-01

- These pumps provide automatic dispensing of engine or gear oils by pressing the pump plunger down and using delivery gun
- Suits most standard 20L drums
- Delivers up to 340ml per stroke
- Suitable for oils up to SAE 140 viscosity
- Supplied with premium oil delivery gun and 1.8m anti-kink hose



**\$1,095<sup>00</sup>**  
GREAT VALUE!

### LUBEMATE POLY DIESEL TANK 200LTR

**L-PDT200**

- Pump Free flow rate - 40l/m
- Voltage - 12V
- Duty Cycle - 30min
- Hose length - 4m x 3/4"
- Nozzle - quality Auto-Shutoff
- Level gauge included
- Lockable lid



**\$1,529<sup>00</sup>**  
GREAT VALUE!

### LUBEMATE POLY DIESEL TANK 400LTR

**L-PDT400**

- Pump Free flow rate - 40l/m
- Voltage - 12V
- Duty Cycle - 30min
- Hose length - 4m x 3/4"
- Nozzle - quality Auto-Shutoff
- Level gauge included
- Lockable lid



**\$1,329<sup>00</sup>**  
GREAT VALUE!

### LUBEMATE POLY ADBLU/DEF TANK 200LTR

**L-PABT200**

- Pump Free flow rate - 26l/m
- Voltage - 12V
- Duty Cycle - 30min
- Hose length - 4m x 3/4"
- Nozzle - quality Manual-Shutoff
- Level gauge included
- Lockable lid



**3 YEAR**  
MACNAUGHT WARRANTY\*

**12 MONTH**  
MACNAUGHT WARRANTY\*

TANK WARRANTY

PUMP WARRANTY

**lubemate**  
by macnaught

\*Stock Subject to availability. Warranty subject to Macnaught Terms & Conditions. ©Macnaught Pty Ltd, 2022.



## Anti-Seize Range

Developed to protect metals parts from corrosion, galling and seizing. Formulated for severe environments.



AUSTRALIAN LEADER IN INDUSTRIAL AND AUTOMOTIVE LUBRICANTS SINCE 1986



AUSTRALIA

molytec.com.au

CHEMICALS/LUBRICATION



# RED LITHIUM GREASE

Withstands high temperature and pressure

Water resistant, protects against rust and corrosion

Contains anti-wear and anti-oxidation additives

**NEW**

1753203

**\$11<sup>95</sup>**

INC GST

Easy aerosol application

Repels rain

Long lasting

**NEW**

1753228

**\$19<sup>95</sup>**

INC GST

# RAIN REPELLENT

ADVANCED WATER BEADING TECHNOLOGY



### FOOD GRADE CHAIN LUBE FG03055



- NSF H1 registered for incidental food contact
- Non-drying film effectively lubricates metal surfaces
- Formula contains anti-wear properties to extend chain life
- Penetrates, lubricates and protects

**\$30<sup>95</sup>**

INC GST

### PENETR8 5501



- Eases the disassembly of plant machinery, tools and equipment for routine maintenance and emergency repairs
- Extreme penetrating action – specially formulated to penetrate rust, dissolve varnishes and gums

**\$24<sup>95</sup>**

INC GST

### ZINC IT 2085



Single component zinc rich compound with a special epoxy binder and contains 93% of the highest purity Zinc in the dried film.

- Provides long term protection
- Flexible continuous protective film
- Metallic zinc coating is universally accepted as the best method of rust prevention

**\$22<sup>95</sup>**

INC GST

### TAC2 5035



Exceptional lubricant with a tough adhesive quality which will bond to chain/wear surfaces to keep them operating in peak condition.

- Reduces friction and wear that cause metal fatigue
- Resists cold, hold and salt water wash-off and high temperature sling-off

**\$16<sup>95</sup>**

INC GST

### COPPER ANTI-SEIZE 3195



A general purpose anti-seize lubricant that prevents seizing and galling caused by high temperatures, heavy loads, vibration and corrosion.

- Unique formula
- Smooth texture, fine particle sizing
- Copper-based
- High temperature resistance

**\$29<sup>95</sup>**

INC GST

### BRIGHT ZINC 2087



Zinc rich paint which produces a highly protective coating resembling the colour of new galvanising.

- The film is comprised of a high level of special water resistant binder
- Contains more than 50% of the highest purity zinc in the dried film
- Long term protection

**\$22<sup>95</sup>**

INC GST

### AEROSTART 5051



A balanced formulation combining active volatile solvents, upper cylinder lubricant and corrosion inhibitors.

- Ensures fast, economical starting of all diesel and gasoline engines
- Starts engine instantly

**\$16<sup>95</sup>**

INC GST

### TREFOLEX CUTTING COMPOUND 3060



- Green coloured, active cutting compound
- Lubricates throughout operation
- Suitable for all users of hand tools
- Ideal to use with stainless steel

**\$34<sup>95</sup>**

INC GST

[WWW.CRCINDUSTRIES.COM.AU](http://WWW.CRCINDUSTRIES.COM.AU)

[f /CRCAus](https://www.facebook.com/CRCAus) [i /CRCindustriesau](https://www.instagram.com/CRCindustriesau) [in /CRC Industries Australia](https://www.linkedin.com/company/CRC-Industries-Australia)



## Aerosol Range

Australia wide, Molytec is committed to providing the best products and service for our customers and their clients.



AUSTRALIAN LEADER IN INDUSTRIAL AND AUTOMOTIVE LUBRICANTS SINCE 1986

**MOLYTEC**

AUSTRALIA

[molytec.com.au](http://molytec.com.au)





# T-REX RANGE

132602 - 125mL

**\$12.95**  
GREAT VALUE !



**T-REX FLEX**  
- Interior / exterior  
- Sealing and bonding  
- Flexible  
- Paintable



**750% ELASTIC**  
137369 - Bright White - 290mL  
137415 - Steel Grey - 290mL

**\$14.95**  
GREAT VALUE !

**T-REX CRYSTAL**  
- 100% crystal clear  
- Food safe  
- Water potable  
- Interior / exterior



**100% TRANSPARENT**  
121969 - 290mL

**\$16.95**  
GREAT VALUE !



128371 - 290mL  
**\$18.95**  
GREAT VALUE !



**T-REX TURBO**  
- Hand tight in 20 mins  
- Ultimate strength: 3hrs  
- Flexible bonding  
- Interior / exterior



**SETS IN 20 MINS**  
132601 - 125mL  
**\$14.95**  
GREAT VALUE !

**T-REX X-TREME**  
- High initial tack: 400kg/m2  
- High bond strength  
- Flexible bonding  
- Interior / exterior



**INITIAL GRAB**

134841 - White - 290mL  
134842 - Black - 290mL  
**\$18.95**  
GREAT VALUE !



**T-REX FLOOR & WALL**



- High bond strength  
- Permanently flexible  
- Interior / exterior  
- All building materials



**EASY TO TROWEL**  
134899 - 4Kg

**\$59.95**  
GREAT VALUE !

**T-REX FAST GRAB CLEAR**

- Clear colour  
- High bond strength  
- High initial grab  
- UV resistant



**IMMEDIATE GRAB**



134912 - 290mL  
**\$19.95**  
GREAT VALUE !

**T-REX FAST GRAB**  
- High initial grab  
- High bond strength  
- Water potable  
- Interior / exterior



**HIGH STRENGTH of 320kg/10cm²**

290mL 127507 - Bright White - 600mL  
147559 - Steel Grey - 600mL

**\$14.95**  
VARIOUS COLOURS

**\$27.95**  
GREAT VALUE !

Scan Code for full T-REX Range



**flexOvit**



**NORTON clipper**

Transforming surfaces...and beyond

**FLEXOVIT MAXX**  
Cut Off Wheel 10 Pack Tin



**\$34.95**  
EACH  
GREAT VALUE!

• High performance ceramic grain, ideal for Steel and Stainless in a handy 10-pack pack tin  
66252845820 125 x 1.0 x 22.23mm

**FLEXOVIT MEGA LINE**  
Cut Off Wheel Maxi Tub



**\$189.00**  
EACH  
GREAT VALUE!

• Australia's favourite cut-off wheel ideal for industrial and trade applications  
6625371411 125 x 1.0 x 22.23mm x 100 wheels

**NORTON Combination**  
Oil Bench Stone



**\$38.95**  
EACH  
GREAT VALUE!

• Sharpen like a pro with aluminium oxide grains  
• Ideal for chisels, knives & more  
66253183013 25 x 50 x 150mm

**NORTON Sand Blasting**  
Grit in a Bucket



**\$39.95**  
EACH  
GREAT VALUE!

• Suitable for jobs large or small  
• Sharp edged, fast cutting, abrasive blast grit  
69083189692 10kg Large Resealable Bucket

**NORTON BLAZE**  
Aluminium Oxide Flap Discs



**\$17.95**  
EACH  
GREAT VALUE!

• Next generation SG ceramic grain  
• Super sized grinding aid for reduced clogging  
• Cuts cooler and faster and lasts longer

66261190002 125 x 22.23mm - C40  
66261190003 125 x 22.23mm - C60  
66261190004 125 x 22.23mm - C80

**NORTON CLIPPER 4x4**  
Explorer Diamond Blade



**FROM \$49.95**  
EACH

• Multi purpose blade cuts all materials  
• Trapezoid shaped segments give a comfortable, smoother cut with lower vibration levels

70184602019 125 x 22.23mm \$49.95  
70184602021 230 x 22.23mm \$109.00  
70184602092 350 x 25.4/20mm \$369.00

**NORTON BLAZE**  
Rapid Strip Discs



**FROM \$29.95**  
EACH

• Heavy coating of Norton SG ceramic alumina  
• Lasts 2x longer than competitive products

63642509505 100 x 16mm \$29.95  
66623303783 115 x 22.23mm \$34.95  
66623303916 125 x 22.23mm \$39.95  
66623303920 180 x 22.23mm \$59.95

**BEAR**  
Cloth Tape



**\$18.95**  
EACH  
GREAT VALUE!

• Made from a strong, flexible cloth backing yet hand tearable. Will stick to almost anything & conforms to irregular surfaces

66623322255 50mm x 50M - BLACK  
66623322256 50mm x 50M - SILVER

Flexovit, Norton, Norton Clipper and Bear are registered trademarks of Saint-Gobain Abrasives, Pt.

FREIGHT CHARGES MAY APPLY





CUTTING & DRILLING

# HSS - METRIC Drill Bit Sets

- Suits steel, cast steel, grey cast iron, annealed cast iron, bronze, brass, aluminium
- Easy centring
- Long tool life
- Good chip removal



**8pc Set**  
Dia. 3.0 to 10.0 mm,  
graduations of 1.0 mm

**\$38<sup>95</sup>**

A/N.: 25203705

**19pc Set**  
Dia. 1.0 to 10.0 mm,  
graduations of 0.5 mm

**\$79<sup>00</sup>**

A/N.: 25203701

**25pc Set**  
Dia. 1.0 to 13.0 mm,  
graduations of 0.5 mm

**\$149<sup>00</sup>**

A/N.: 25203702

\* Individual drill bits also available



Celebrating  
2022  
**40**  
years  
in Australia

## General Purpose 1/4" Shank MX NCC Burr Sets

- Value for money
- Good stock volume
- Popular shapes



### 4pc MX NCC Burr Set

- 1 x Cylindrical
- 1 x Cylindrical Radius
- 1 x Pointed Tree
- 1 x Tree Radius

**\$99<sup>00</sup>**

A/N.: 75609063

### 8pc MX NCC Burr Set

- 1 x Cylindrical
- 3 x Cylindrical Radius
- 1 x Tree Radius
- 1 x Cone Radius
- 1 x Pointed Cone
- 1 x Ball

**\$199<sup>00</sup>**

A/N.: 75609064



## General Purpose Tradie Pack

**10 x** 125mm (5") x 1.0mm  
Ultra-Thin Cut-Off Wheels

- Suitable for mild steel & stainless steel (INOX)
- Handy resealable 10 wheel hang pack
- Ideal for cordless angle grinders
- Free of iron, sulphur & chlorine



**\$24<sup>95</sup>**

A/N.: 69902634

# ACTIROX METAL GRINDING FIBRE DISC



VSM ceramic grain  
Made In Germany



Request A Demo  
\* Conditions apply

**\$4<sup>95</sup>**

A/N.: 75485211



**\$33<sup>95</sup>**

A/N.: 44890090

**AF799 STEEL Fibre Disc**  
Perfect for STEEL applications  
also suits INOX (Stainless Steel)

- Unique ceramic grain
- Heavy metal grinding
- Suits high powered angle grinders
- High performance backing pad for better results

**Fibre Disc Backing Pad High Performance**

- M14 Thread
- Long tool life
- Cool grinding
- Suits ACTIROX

\* Disc & Backing Pad also available in other sizes

## General Purpose Economy Rolls

- Highly flexible material with excellent grit adhesion
- Easily adapted to all workpieces
- Consistent finish & long life

	25mmx50m	50mmx50m
Grit	A/N.	A/N.
40	47300037	47300049
60	47300038	47300050
80	47300039	47300051
120	47300032	47300053

**\$32<sup>95</sup>**

**\$49<sup>95</sup>**

\* Economy rolls available in other sizes



Follow us on social media



[www.pferd.com.au](http://www.pferd.com.au)

## ANTI-VIBRATION SOLUTIONS



MULTICUSHIONS MOBILE TWO PIECE PLATE ISOLATORS VEE MOUNTS CONFLEX ISOLATORS





0.35mm 4x18 Rows Steel Wire  
Long Plastic Handle Brush



0.35mm 4x18 Rows  
Stainless Steel Wire  
Long Plastic Handle  
Brush

**\$9<sup>00</sup>**  
5175-SW-4R

**\$12<sup>95</sup>**  
5175-SS-4R

# saber

## COBALT BI-METAL HOLE SAW SETS

**STANDARD S1 SET**  
8070-S1 16, 20, 22, 25, 32, 40, 50MM BI-METAL HOLE SAWS,  
2 MANDRELS & SPARE HSS PILOT DRILL

**QUICK CHANGE S2 & S3 SETS**  
8070-S2 16, 20, 22, 25, 32, 40, 50MM BI-METAL HOLE SAWS,  
QUICK CHANGE MANDREL & SPARE HSS PILOT DRILL

8070-S3 16, 20, 22, 25, 32, 40, 50, 54, 64, 92MM BI-METAL HOLE SAWS,  
QUICK CHANGE MANDREL & SPARE HSS PILOT DRILL



**\$119<sup>00</sup>**  
8070-S1

**\$169<sup>00</sup>**  
8070-S2

**\$235<sup>00</sup>**  
8070-S3

Saber general purpose hole saws have a 38mm depth of cut and are suitable for a wide variety of materials and applications. The high speed steel cutting edge provides shock resistant teeth and resists tooth stripping. 4/6 positive tooth configuration allows for fast, smooth cuts and less vibration.

SABER S2 & S3 QUICK CHANGE SETS  
Each saw in the set is fitted with a quick change adaptor. In the smaller saws the adaptor includes holes for the mandrel drive pins. In the large saws the mandrel drive pins engage directly with the holes in the back of the saw body. Simply retract the mandrel collar and slide the saw in place. Align the drive pins with the adaptor or saw body. Release the collar and it securely locks the saw in place. Fast and simple saw changes!



**IMPACT Hex Drill Set**  
23 Piece | HSS Gold Series  
2.00mm - 13.0mm increments

Get the job done fast using a 1/4" Impact Driver!

Price Inc GST  
**\$159<sup>00</sup>**  
SM23HPB



**30% MORE HOLES\***

**TITANIUM NITRIDE COATING**  
for faster drilling & longer life

**1/4" HEX SHANK**

**23 PIECE**



**Drill Sets**  
Metric & Imperial

- 135° Split point allows faster drilling and minimises wandering
- Strengthened flute design for durability and longevity
- Fully ground premium HSS to increase durability



**25 PIECE**

**29 PIECE**

Code	Pieces	Size	Price INC GST
BTW25M	25	1 - 13mm - 0.5mm	\$59.95
BTW29I	29	1/16" - 1/2" - 1/64"	\$69.95

**Step Drill Set**  
3 Piece | Straight Flute  
4-12mm, 4-20mm & 6-30mm

- Drills: Sheet metal, steel & plastic
- Cut depth: Up to 4mm
- Fully ground premium HSS M2 to increase durability



Price Inc GST  
**\$69<sup>95</sup>**  
BTWSD-SET3

**3 PIECE**



**Cleanable Nutsetter**  
6 Piece | Driver Bit Set  
1/4", 5/16" & 3/8"

- Easily clean your nutsetter without losing the magnet



**50x LIFE**

**Magnetic**

REMOVE SOCKET TO CLEAN

Price Inc GST  
**\$29<sup>95</sup>**  
NSSMC-SET6

INTERCHANGEABLE for more tooling combinations



**EXTREME HEAVY METAL**  
**Heavy Metal Blade**  
185mm x 20 x 36T

Cut up to 20mm thick metal quickly, cleanly and safely with your 185mm circular saw.

Extreme Heavy Metal Blades with optimum cutting edge angle have been engineered for extreme performance.

Price Inc GST  
**\$125<sup>00</sup>**  
MBR1852036H



**New**

**CUTS 20mm THICK**

**CERMET TIPS**



**GOLD Series Drill Bits**  
Ideal for the widest range of materials:  
Steel, wood, plastic & stainless steel



**QUALITY**  
you can trust!

**30% MORE HOLES**

Independent controlled testing has proved that the Alpha GOLD Series drills outperform other drills on the market by up to 30%



# suttontools BUILDING AUSTRALIA SINCE 1917



**BLUE BULLET**  
TWIST DRILLS

### 25 Pce Blue Bullet Metric Drill Set

The blue finish reduces chip build up on the cutting edge and is a better choice when drilling ferrous materials.

- 1.0 - 13.0mm x 0.5mm rises

**\$195.00**  
INC GST  
P/N: D102 SM3



### 3 Pce HSS Step Drill Set

For use in sheet metal, aluminium, plastic and fibreglass. During drilling the next step deburrs the previously drilled hole

- Range 4-12, 9 steps
- Range 4-20, 9 steps
- Range 4-30, 14 steps

**\$215.00**  
INC GST  
P/N: D504 SET3



### 10 Pce Easy-Out Screw Extractor Set

- Extractors: #1 - #5
- Left Hand Cobalt Jobber Drills: 2.0, 3.0, 4.0, 5.5, 7.5mm

**\$115.00**  
INC GST  
P/N: M603 S20L



### 10 Pce Left Hand Cobalt Metric Drill Set

- For general purpose drilling of broken bolts in conjunction with Sutton Screw Extractors
- 1.0 - 10.0mm x 1mm rises

**\$155.00**  
INC GST  
P/N: D202 LH10M



**FN**

### 200 Pce HSS Bright Drill Set

- Metric Sizes: 1.0 - 6.0 x 0.5mm rises + 3.2, 4.2, 8.0, 10.0, 12.0mm
- Imperial Sizes: 5/64 - 7/32 x 1/64" rises + 1/4, 5/16, 3/8, 1/2"

**\$165.00**  
INC GST  
P/N: 165399200



### 3 Pce Metric Straight HSS ISO Tap Set

- Contains Taper, Intermediate and Bottoming
- Made from High Speed Steel

Size	Pitch	Item #	Price inc. GST
M3	0.5	T901 0300	<b>\$68.95</b>
M4	0.7	T901 0400	<b>\$59.95</b>
M5	0.8	T901 0500	<b>\$62.95</b>
M6	1	T901 0600	<b>\$64.95</b>
M8	1.25	T901 0800	<b>\$67.95</b>
M10	1.5	T901 1000	<b>\$92.95</b>
M12	1.75	T901 1200	<b>\$139.00</b>



### 7 Pce Heavy Duty Bi-Metal Holesaw Electrician Set

- Suited to cut steels, stainless steel, cast iron, non-ferrous materials, plastic and wood
- Holesaws: 16, 20, 22, 25, 32, 40 & 51mm

**\$109.00**  
INC GST  
P/N: H125 BM9



### 7 Pce Multi-Purpose TCT Holesaw Electrician Set

- Suited to cut timber, hardwood, softwood, MDF, plasterboard, compressed fibre cement sheet, cement sheet, plastics, ceramic tiles and abrasive materials
- Holesaws: 20, 25, 32, 40, 60 & 92mm

**\$219.00**  
INC GST  
P/N: H127 MP9

A family business built upon  
**TRUST, INNOVATION**  
**QUALITY & RELIABILITY**



**BREMICK™**



# suttontools BUILDING AUSTRALIA SINCE 1917



### HSS Countersink

For use in steel, cast iron, brass and aluminium.

Size	Item #	Price Inc. GST
8.3mm	107CS0083	\$19.45
12.4mm	107CS0124	\$24.90
20.5mm	107CS0205	\$57.95



### Smart Chamfer

- Tungsten Carbide
- For Rod Size 13-35mm
- 8mm Hex Shank

**\$99.00**  
INC GST  
P/N: 107DT1335



### 5 Pce Carbide Burrs Sets

- Double cut burrs for rapid stock removal in harder materials
- Includes: Cylindrical (Square), Cylindrical (Radius), Tree (Radius), Tree (Pointed) & Flame

Size	Item #	Price Inc. GST
1/4" Shank	918CRSET5S	\$260.00
6mm Shank	918CRSET5M	\$275.00



### Die Grinder Kit

- Pneumatic Die Grinder
- Die Grinder Collets: 1/8", 1/4", 3 & 6mm
- 2 x Wrenches

**\$129.00**  
INC GST  
P/N: B9Q2 0002



### One Hand Aluminium Clamp

- Heavy duty design for industrial and professional application
- Aluminium alloy clamp body to withstand great clamp pressure
- Maximum clamping force up to 350kgs

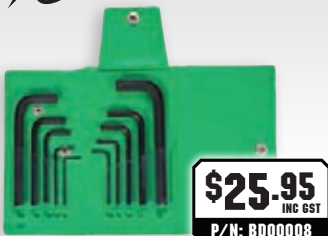
Size	Item #	Price Inc. GST
150mm	L110 0150	\$69.00
300mm	L110 0300	\$72.00
450mm	L110 0450	\$75.00



### Aviation Snips

Get the power of precision. CHANNELLOCK® snips make cleaner curved and straight cuts with minimum effort.

Size	Item #	Price Inc. GST
Left Snip	610AL	\$75.00
Right Snip	610AR	\$75.00



**\$25.95**  
INC GST  
P/N: BD00008

### 10 Pce L-Wrench Short Imperial Set

- 1/16, 5/64, 3/32, 1/8, 5/32, 3/16, 7/32, 1/4, 5/16, 3/8"



**\$25.95**  
INC GST  
P/N: BD00009

### 10 Pce L-Wrench Short Metric Set

- 1.3, 1.5, 2, 2.5, 3, 4, 5, 6, 8, 10mm



### Black Book

- Matt laminated grease proof pages
- Wire bound to stay flat on workbench

Size	Item #	Price Inc. GST
Engineers Black Book - 3rd Edition	L100 V3EN	\$78.00
Engineers Black Book - Large Edition	L103 V3EN	\$105.00
Electrical Black Book - 2nd Edition	L300 V2EN	\$78.00
Fasteners Black Book - 1st Edition	L200 V1EN	\$78.00
Fasteners Black Book - Large Edition	L203 V1EN	\$105.00

NEW

Promo # 1737



### HEAT SHRINK KITS



Part No. HSA88 88 PCS DUAL WALL

**\$49.95**



Part No. HSA112 112 PCS SINGLE WALL

**\$23.95**



# metabo®

PROFESSIONAL POWER TOOL SOLUTIONS

<p><b>18 V 3 MODE ROTARY HAMMER DRILL KIT</b></p> <p><b>KHA 18 LTX BL 24 Q SE 1 HD 5.5</b> AU60014900</p> <p><b>BRUSHLESS</b></p>  <p>1. 3 Mode Rotary Hammer Drill KHA 18 LTX BL 24 Q • 1 x 5.5 Ah LiHD Battery Pack • Air-Cooled Charger ASC 55</p> <p><b>\$399</b></p>	<p><b>18 V BRUSHLESS COMPACT RECIP SAW KIT</b></p> <p><b>SSE 18 LTX BL COMP 1 HD 4.0 K</b> AU60236601</p> <p><b>BRUSHLESS</b></p>  <p>1. Compact Sabre Saw SSE 18 LTX BL COMPACT • 1 x 4.0 Ah LiHD Battery Pack • Air-Cooled Charger ASC 55</p> <p><b>\$279</b></p>	<p><b>18 V BRUSHLESS RECIP SAW KIT</b></p> <p><b>SSE 18 LTX BL 1 HD 5.5 K</b> AU60226715</p> <p><b>BRUSHLESS</b></p>  <p>1. Sabre Saw SSE 18 LTX BL • 1 x 5.5 Ah LiHD Battery Pack • Air-Cooled Charger ASC 55</p> <p><b>\$349</b></p>
<p><b>240 V TABLE SAW &amp; STAND KIT</b></p> <p><b>TS 254 M SET</b> AU61025400</p>  <p>• Maximum cutting height 90 / 45°: 80 / 48 mm • Maximum cutting width at rip fence: 520 mm • Saw blade: 254 x 30 mm • Motor brake for quick stop of the saw blade in 3 seconds • Easy saw blade change with spindle lock • Restart protection: prevents unintentional start-up after power supply interruption</p> <p><b>\$599</b></p>	<p><b>400 Nm IMPACT WRENCH / GRINDER KIT</b></p> <p><b>MET18BL2MB2HD5.5N</b> AU68202655</p> <p><b>BRUSHLESS</b></p>  <p>1. 400 Nm Impact Wrench SSW 18 LTX 400 BL 2. 125 mm Angle Grinder WB 18 LTX BL 125 Quick • 2 x 5.5 Ah LiHD Battery Packs • Air-Cooled Charger ASC 55 • 2 x metaBOX Cases</p> <p><b>\$749</b></p>	<p><b>DRILL / 400 Nm IMPACT WRENCH KIT</b></p> <p><b>MET18BL2MB2HD5.5AH</b> AU68201055</p> <p><b>BRUSHLESS</b></p>  <p>1. 130 Nm Hammer Drill SB 18 LTX BL I 2. 400 Nm Impact Wrench SW 18 LTX 400 BL • 2 x LiHD Battery Packs • Air-Cooled Charger ASC 55 • 1 x metaBOX Case</p> <p><b>\$749</b></p>

**12 PIECE KIT**

**MET18MX12LB4HD455BT**  
AU69000180



1. 130 Nm Brushless Hammer Drill SB 18 LTX BL I  
2. 16 mm Brushless Rotary Hammer Drill BH 18 LTX BL 16  
3. 200 Nm Brushless Impact Driver SSD 18 LTX 200 BL  
4. 400 Nm Brushless Impact Wrench SSW 18 LTX 400 BL  
5. 125 mm Brushless Angle Grinder WB 18 LTX BL 125 Quick  
6. Brushless Compact Sabre Saw SSE 18 LTX BL COMPACT  
7. 165 mm Brushless Circular Saw KS 18 LTX 66 BL  
8. Brushless Multi-Tool MT 18 LTX BL QSL  
9. Brushless Random Orbital Sander SXA 18 LTX 125 BL  
10. Compact Vacuum Cleaner AS 18 L PC COMPACT  
11. LED Lamp ULA 14.4-18 LED  
12. AM/FM Worksite Radio with Bluetooth R 12-18 BT  
• 2 x 5.5 Ah LiHD Battery Packs • 2 x 4.0 Ah LiHD Battery Packs  
• 2 x Large Tool Bags • ASC 145 Duo Fast Charger

**\$2999**

<p><b>18 V BRUSHLESS LAWN MOWER</b></p> <p><b>RM 36-18 LTX BL 46 10 K</b> AU60160600</p> <p><b>BRUSHLESS</b></p>  <p>1. Brushless Lawn Mower RM 36-18 LTX BL 46 • 2 x 10.0 Ah LiHD Battery Packs • ASC 145 Duo Fast Charger</p> <p><b>\$899</b></p>	<p><b>2 x 18 V BRUSH CUTTERS</b></p> <p><b>FSD 36-18 LTX BL 40</b> 601610850</p> <p><b>BRUSHLESS</b></p> <p>*D-HANDLE BRUSH CUTTER</p> <p><b>FSB 36-18 LTX BL 40</b> 601611850</p> <p><b>BRUSHLESS</b></p> <p>*BIKE-HANDLE</p> <p>• Quiet brushless brush cutter with 40 cm cutting diameter • Versatile use with twin line spool for grass cuts or blades (accessory) for brushwood • Easy readjustment of the line by means of short tapping of the spool head while working • Robust use thanks to metal motor housing and additional hoop guard on the battery pack • Stepless speed control with No-load speed: 0 - 6000 rpm • Line change - quick and without tools • Fast work initiation thanks to fast, powerful startup • Rubberised grip areas and additional safety switch</p> <p><b>\$399</b>      <b>\$449</b></p>	<p><b>18 V BRUSHLESS LEAF BLOWER KIT</b></p> <p><b>LB 18 LTX BL 1 HD 5.5 K</b> AU60160700</p> <p><b>BRUSHLESS</b></p>  <p>1. Brushless Leaf Blower LB 18 LTX BL • 1 x 5.5 Ah LiHD Battery Pack • Air-Cooled Charger ASC 55</p> <p><b>\$399</b></p>
---	--	---

## REDEMPTION OFFERS

\*For More Details, Visit: [www.metabo.com/redemptions](http://www.metabo.com/redemptions)  
OR  
SCAN THE QR CODE







# SPRING INTO ACTION

AT TRADESMART



DLX2412T

**LXT 18V Brushless 2 Piece Combo Kit**

Kit includes: DHP486Z, DTD154Z, 2 x BL1850B, DC18RC & carry case

**\$679**



DK0115G601

**XGT 40V Max Brushless 6 Piece Combo Kit**

Kit includes: HP001GZ, TD001GZ, GA005GZ, HR001GZ, HS003GZ, JR001GZ, 2x BL4040, DC40RA & tool bag (832367-6).  
BONUS: 18V charging adaptor (ADP10).

**\$2,489**



DTR1802KX1

**LXT 18V Brushless Rebar Tying Tool**

- Automatically ties rebar in a rapid single motion
- Continuous actuation mode for efficient continuous tying
- 6 stage adjustable rebar tying strength

**\$1,959**



CE001GL203

**XGT 80V Max (40Vx2) Brushless 355mm (14") Power Cut Kit**

Kit includes: CE001GZ, 2 x BL4080F, DC40RB.

**\$2,199**



E-12790-5

**355mm x 25.4 x 4.3 Metal Cutting Discs - 5PK**

- Suitable for CE001GZ

**\$105**

B-15992

**\$259 350mm x 25.4/20mm Diamond Blade Segmented**

- 3 dimensional diamond grid
- 10mm high diamond segment



EA01H508-22



Nothing but **HEAVY DUTY.**

Milwaukee AUTHORIZED RETAIL PARTNER

**HOLE DOZER™ WITH CARBIDE TEETH 12 PIECE**  
PN: 49223090

**\$238.00**  
GREAT BUY!



**BONUS SHOCKWAVE™ RED HELIX TITANIUM DRILL SET 10 PCE KIT**  
PN: 48894859  
VIA REDEMPTION\*  
\*ONLY AVAILABLE FROM JULY 1<sup>ST</sup> - SEP 30<sup>TH</sup> 2022

**TORQUE LOCK 254MM/10" & 152MM/6" 2 PACK**  
PN: 48223602

**\$38.00**  
GREAT BUY!



**BONUS 48223103 - INKZALL CHISEL TIP MARKER BLACK**

**4 PIECE PRY BAR SET**  
PN: 48229214

**\$88.00**  
GREAT VALUE!



**BONUS**

**48732920 - PERFORMANCE CLEAR SAFETY GLASSES**

**SHOCKWAVE™ 50 PIECE DRILL AND DRIVE SET**  
PN: 48324024

**\$59.00**  
GREAT BUY!



**SHOCKWAVE™ IMPACT DUTY**

**BONUS 48221961 - SNAP OFF KNIFE PRECISION BLADE 18MM**

**RED HELIX™ COBALT DRILL BIT 25 PIECE KIT**  
PN: 48892531

**\$236.00**  
GREAT BUY!



**BONUS 48221540 - FASTBACK MULTI-FUNCTION KNIFE**

**JAM-FREE STEP DRILL SET**  
PN: 48899399

**\$179.00**  
GREAT BUY!



**BONUS 4932471112 - MULTI-MATERIAL 8 PIECE DRILL BIT SET**

\*Terms and Conditions apply, see website for details. \*Offers valid during the promotional period Friday 1st July 2022 until Friday 30th September 2022. \*Online redemption must be claimed by 14th October 2022. \*Please allow up to 8 weeks for delivery



**DCLE34031 - 18V XR COMPACT 3 X 360° MULTILINE LASER**



**VISIBLY POWERFUL PERFORMANCE**

POWER TOOLS

# HOT DEALS STOREWIDE



Nothing but **HEAVY DUTY.**<sup>™</sup>

Milwaukee **AUTHORISED RETAIL PARTNER**

**M18 FUEL™ 3 PIECE POWER PACK 3M2**  
PN: M18FPP3M2-502B

**\$1049**  
GREAT BUY!

**M18 FUEL**  
DRIVEN TO OUTPERFORM.



**BONUS**



**M18BBL-0** - M18™ CORDLESS COMPACT BLOWER - TOOL ONLY **M18**

**M18 FUEL™ ONE-KEY™ 3/4" HIGH TORQUE IMPACT WRENCH WITH FRICTION RING - TOOL ONLY**  
PN: M18ONEFHIWF34-0

**\$607.00**  
GREAT BUY!

**M18 FUEL**  
DRIVEN TO OUTPERFORM.

**ONE-KEY™**



**BONUS**



**49667017** - SHOCKWAVE™ 3/4" DRIVE 8PC SAE STANDARD 6 POINT IMPACT SOCKET SET

**M18 FUEL™ 4 PIECE POWER PACK 4M2**  
PN: M18FPP4M2-602B

**\$1579**  
GREAT BUY!



**BONUS**



**M18HB6** - M18™ REDLITHIUM™ -ION HIGH OUTPUT™ 6.0AH BATTERY PACK **M18**

**M12™ SPOT POLISHER/DETAIL SANDER KIT**  
PN: M12BPS-202B

**\$379.00**  
GREAT BUY!



**M12**

**M12BPS-0** - M12™ SPOT POLISHER/DETAIL SANDER - TOOL ONLY... **\$200.00** GREAT BUY!

**M12 FUEL™ STRAIGHT DIE GRINDER - TOOL ONLY**  
PN: M12FDGS-0



**\$258.00**  
GREAT BUY!

**M12 FUEL**  
DRIVEN TO OUTPERFORM.

**M12 FUEL™ RIGHT ANGLE DIE GRINDER - TOOL ONLY**  
PN: M12FDGA-0



**\$258.00**  
GREAT BUY!

**M12 FUEL**  
DRIVEN TO OUTPERFORM.

**M12™ RIGHT ANGLE DIE GRINDER PROTECTIVE BOOT (SUITS M12FDGA-0)**  
PN: 49162485



**\$23.00**  
GREAT BUY!

**M12**

**M18 FUEL™ 125MM FLATHEAD BRACING ANGLE GRINDER WITH DEADMAN PADDLE SWITCH - TOOL ONLY**  
PN: M18FAGF125XPDB-0



**\$462.00**  
GREAT BUY!

**M18 FUEL**  
DRIVEN TO OUTPERFORM.

**M18 FUEL™ 1/4" DIE GRINDER - TOOL ONLY**  
PN: M18FDG-0

**\$297.00**  
GREAT BUY!



**M18 FUEL**  
DRIVEN TO OUTPERFORM.

**M12™ CORDLESS 3/8" IMPACT RATCHET KIT 1X 2.0AH**  
PN: M12IR-201B



**\$335.00**  
GREAT BUY!

**M12**

**M12IR-0** - M12™ CORDLESS 3/8" IMPACT RATCHET - TOOL ONLY... **\$204.00** GREAT BUY!

**M12 FUEL™ 3/8" HIGH SPEED RATCHET - TOOL ONLY**  
PN: M12FHIR38-0



**\$285.00**  
GREAT BUY!

**M12™ 3/8" RATCHET PROTECTIVE BOOT (SUITS M12FIR38-0)**  
PN: 49162557



**\$34.00**  
GREAT BUY!

**M12**

**M12 FUEL™ 3/8" IMPACT RATCHET KIT 1X 2.0AH**  
PN: M12FIR38-201B



**\$417.00**  
GREAT BUY!

**M12 FUEL**  
DRIVEN TO OUTPERFORM.

**M12FIR38-0** - M12 FUEL™ 3/8" IMPACT RATCHET - TOOL ONLY... **\$285.00** GREAT BUY!

**M12 FUEL™ IMPACT RATCHET - TOOL ONLY**  
PN: M12FIR12-0



**\$288.00**  
GREAT BUY!

**M12 FUEL™ 1/2" RATCHET PROTECTIVE BOOT (SUITS M12FIR12-0)**  
PN: 49162558

**\$34.00**  
GREAT BUY!



**M12 FUEL**  
DRIVEN TO OUTPERFORM.

**M12 FUEL™ 3/8" EXTENDED REACH IMPACT RATCHET - TOOL ONLY**  
PN: M12FIR38LR-0



**\$315.00**  
GREAT BUY!

**M12 FUEL**  
DRIVEN TO OUTPERFORM.

**M12 FUEL™ 3/8" EXTENDED RATCHET PROTECTIVE BOOT (SUITS M12FIR38LR-0)**  
PN: 49162560

**\$23.00**  
GREAT BUY!

**M18 FUEL™ 2 PIECE POWER PACK 2F2**  
PN: M18FPP2F2-502P



**\$1019**  
GREAT BUY!

**BONUS SHOCKWAVE™ 3/4" DRIVE 8PC SAE DEEP 6 POINT IMPACT SOCKET SET 49667018 VIA REDEMPTION\***  
\*ONLY AVAILABLE FROM JULY 1<sup>st</sup> - SEP 30<sup>th</sup> 2022

**M12 FUEL™ 3/8" STUBBY IMPACT WRENCH WITH FRICTION RING KIT**  
PN: M12FIW38-202B



**\$468.00**  
GREAT BUY!

**M12 FUEL**  
DRIVEN TO OUTPERFORM.

**BONUS M12 FUEL™ 1/4" HEX IMPACT DRIVER - TOOL ONLY M12FD-0 VIA REDEMPTION\***  
\*ONLY AVAILABLE FROM JULY 1<sup>st</sup> - SEP 30<sup>th</sup> 2022

\*Terms and Conditions apply, see website for details. \*Offers valid during the promotional period Friday 1st July 2022 until Friday 30th September 2022. \*Online redemption must be claimed by 14th October 2022. \*Please allow up to 8 weeks for delivery



# FOLLOW US ON FACEBOOK

POWER TOOLS



Nothing but **HEAVY DUTY.**<sup>™</sup>



**AUTHORISED  
RETAIL PARTNER**



**M18 FUEL™ OUTDOOR POWER HEAD WITH  
LINE TRIMMER ATTACHMENT**  
PN: M18FOPHLKIT-0



**\$439.00**  
GREAT BUY!

**M18 FUEL**  
DRIVEN TO OUTPERFORM.

AVAILABLE ATTACHMENTS:

M18FOPH-CSA - M18 FUEL™ POLE SAW ATTACHMENT

M18FOPH-EA - M18 FUEL™ EDGER ATTACHMENT

M18FOPH-EXA - M18 FUEL™ EXTENSION ATTACHMENT

M18FOPH-HTA - M18 FUEL™ HEDGE TRIMMER ATTACHMENT

M18FOPH-LTA - M18 FUEL™ LINE TRIMMER ATTACHMENT

**\$261.00**  
GREAT BUY!

**\$208.00**  
GREAT BUY!

**\$105.00**  
GREAT BUY!

**\$261.00**  
GREAT BUY!

**\$208.00**  
GREAT BUY!

**M12 FUEL™ HEDGE  
TRIMMER - TOOL  
ONLY**  
PN: M12FHT-0

**\$199.00**  
GREAT BUY!



**M12 FUEL**  
DRIVEN TO OUTPERFORM.

**M18 FUEL™ 24" (610MM)  
HEDGE TRIMMER - TOOL ONLY**  
PN: M18CHT-0

**\$481.00**  
GREAT BUY!



**M18 FUEL**  
DRIVEN TO OUTPERFORM.

**M18 FUEL™ 18" (457MM)  
HEDGE TRIMMER - TOOL ONLY**  
PN: M18CHT180

**\$399.00**  
GREAT BUY!



**M18 FUEL**  
DRIVEN TO OUTPERFORM.

**M12 FUEL™ COMPACT  
BLOWER - TOOL ONLY**  
PN: M12BBL-0

**\$135.00**  
GREAT BUY!



**M12 FUEL**  
DRIVEN TO OUTPERFORM.

**M18™ COMPACT  
BLOWER KIT 2X 5.0AH**  
PN: M18BBL-502B

**\$418.00**  
GREAT BUY!



**M18**

**M18BBL-0 - M18™ CORDLESS  
COMPACT BLOWER - TOOL ONLY...**

**\$156.00**  
GREAT BUY!

**M18™ SWITCH TANK™ 15L  
BACKPACK WATER SUPPLY WITH  
POWERED BASE**  
PN: M18BPPWS-0

**\$492.00**  
GREAT BUY!



**M18**

**491628WS - SWITCHTANK™ 15L  
WATER SUPPLY TANK ASSEMBLY...**

**\$240.00**  
GREAT BUY!

**M18™ SWITCH  
TANK™ 15L BACKPACK  
CHEMICAL SPRAYER  
WITH POWERED BASE**  
PN: M18BPPFCS-0

**\$492.00**  
GREAT BUY!



**491628PS - SWITCH TANK™ 15L CHEMICAL SPRAYER  
TANK ASSEMBLY...**

**\$241.00**  
GREAT BUY!

**49162728 - REPLACEMENT SPRAYER NOZZLES FOR  
M18™ SWITCH TANK™ BACKPACK CHEMICAL SPRAYER...**

**\$52.00**  
GREAT BUY!

**M18 FUEL™ 16" (406 MM)  
CHAINSAW - TOOL ONLY**  
PN: M18FCHS-0

**\$618.00**  
GREAT BUY!



**M18 FUEL**  
DRIVEN TO OUTPERFORM.

**BONUS REAR HANDLE CHAIN SAW  
CASE M18FCHSCASE**  
VIA REDEMPTION\*

\*ONLY AVAILABLE FROM JULY 1<sup>ST</sup> - SEP 30<sup>TH</sup> 2022

**M12 FUEL™ HATCHET™ 6"  
(152 MM) PRUNING SAW KIT**  
PN: M12FHS602B

**\$567.00**  
GREAT BUY!



**M12**

**BONUS M12™ COMPACT BLOWER -  
TOOL ONLY M12BBL-0**  
VIA REDEMPTION\*

\*ONLY AVAILABLE FROM JULY 1<sup>ST</sup> - SEP 30<sup>TH</sup> 2022

**M18 FUEL™ BLOWER -  
TOOL ONLY**  
PN: M18FBL-0

**\$399.00**  
GREAT BUY!



**M18 FUEL**  
DRIVEN TO OUTPERFORM.

**BONUS M18™  
REDLITHIUM™-ION HIGH OUTPUT™  
8.0AH BATTERY PACK M18HB8**  
VIA REDEMPTION\*

\*ONLY AVAILABLE FROM JULY 1<sup>ST</sup> - SEP 30<sup>TH</sup> 2022

**M18 FUEL™ 14" (356 MM)  
CHAINSAW - TOOL ONLY**  
PN: M18FCHS140

**\$596.00**  
GREAT BUY!



**M18 FUEL**  
DRIVEN TO OUTPERFORM.

**M18™ REDLITHIUM™-ION HIGH  
OUTPUT™ 12.0AH DUAL BAY  
STARTER PACK**  
PN: M18HOSPD122B

**\$659.00**  
GREAT BUY!



**M18**

**M18™ REDLITHIUM™-ION  
HIGH OUTPUT™ 8.0AH DUAL  
BAY STARTER PACK**  
PN: M18HOSPD802B

**\$559.00**  
GREAT BUY!



**M18**

**NOW AVAILABLE!** OFFER VALID FROM 1ST JULY TO THE 30TH SEPTEMBER 2022

FREIGHT CHARGES MAY APPLY







**PACER P08 WAX & GREASE REMOVER 20LT**  
PN. PWGR20

**\$129<sup>00</sup>**  
GREAT VALUE!

**PACER ENGINE DEGREASER 20L**  
PN. PED20



**\$119<sup>00</sup>**  
GREAT VALUE!



**\$129<sup>00</sup>**  
GREAT VALUE!

**SEPTONE DEGREASE IT DEGREASER 20L**  
PN. ADDI20



**SEPTONE SUPERCLENE CITRUS DEGREASER / CLEANER 20L**  
PN. HSS20

**\$139<sup>00</sup>**  
GREAT VALUE!

# PUREGAS

An ISO 9001 certified company

**OWN YOUR GAS CYLINDERS!**

## NO MORE RENTALS

Pre-filled gas cylinders waiting for you. A user friendly industrial gas cylinder swap system that saves you time and money.

Bring in your empty PUREGAS cylinder and exchange it for a full one - only pay for the gas. Our gas cylinder swap system allows you to own your gas cylinder without being charged an ongoing rental fee.



Powering the nation since 1936



**EF7200E**  
**6 kVA YAMAHA PETROL GENERATOR**  
• Yamaha MZ360 engine • 28L fuel tank  
• Popular for emergency backup

**GREAT VALUE!**  
**\$2899**

**DGUH2.7S-2**  
**3.3 kVA HONDA POWERED GENERATOR**

- Honda GX200 engine • Italian NSM Alternator
- Small, light, durable & powerful
- Makes light work of the trickiest jobs



**SUPER SPECIAL**  
**\$1099**



**DGUH7S-2**  
**8 kVA HONDA POWERED PETROL GENERATOR**  
• Honda GX390 engine • Popular choice & great all-rounder! • Handy for the farm or building site

**BEST SELLER!**  
**\$2499**



**DGWGH7S-2**  
**7 kVA 200 AMP WELDER GENERATOR**  
• Honda GX390 engine • 200 Amp welder  
• 60% duty cycle • 12 & 24V battery charger

**RIPPER PRICE**  
**\$3149**



[dunlite.com.au](http://dunlite.com.au)

## BROMIC PLUMBING & GAS

**Oxyset Mobile Brazing System**

**Pro Oxyset 2.2L Mobile Brazing System**



**\$399**  
Great Value!

P/N 1811162

- Designed for use with 2.2L Oxygen cylinder
- Metal cylinder rack ideal for trade environments



**\$299**  
Great Value!

P/N 1811167-1

- MAP-Pro™ regulator with flow gauge
- Oxygen regulator with content & pressure out gauge
- Portable, lightweight & compact cylinder rack

**Bernzomatic Pro Solder Butane Kit**



**\$74.95**  
Great Value!

P/N ST1000K

- ST1000 Micro Torch with seven interchangeable settings
- Fine-tuned precision flame with continuous flame lock
- Refillable. For use with Butane



**\$39.95**  
Great Value!

P/N 1811620

- Adjustable jet flame torch with on/off control
- Comes with 330g Butane-Propane cylinder
- Butane-Propane mix provides 20% faster heat transfer than butane function

**TRADESMART MEMBERS:** ACT: • Fyshwick NSW: • Albury • Bega • Beresfield • Broken Hill • Chipping Norton • Coffs Harbour • Coonamble • Corowa • Cowra • Deniliquin • Erina • Forbes • Goulburn • Hay • Lismore • Moorebank • Muswellbrook • Narrabri • Penrith • Silverwater • Tamworth • Tomago • Tumut • West Wyalong • Wetherill Park • Young NT: • Alice Springs QLD: • Bowen • Biloela • Bundaberg • Cairns • Caloundra • Capella • Charleville • Charters Towers • Chinchilla • Clermont • Coomera • Gladstone • Hughenden • Longreach • Mareeba • Moranbah • Mount Isa • Proserpine • Rockhampton • Richmond • Roma • Springsure • Stanthorpe • Toowoomba • Tully SA: • Berri • Edwardstown • Kilburn • Mt Barker • Naracoorte • Newton • Penola TAS: • Invermay • Moonah • Ulverstone VIC: • Cobram • Dandenong • Geelong North • Horsham • Laverton Nth • Mildura • Robinvale • Shepparton • Tullamarine WA: • Albany • Bibra Lake • Broome • Busseton • Port Hedland • Rockingham • Narrogin • Kalgoorlie • Osborne Park • Moora • Welshpool • Wongan Hills

• ALL PRICES INCLUDE GST • Some products are subject to plus freight costs where applicable • Some advertised products may not be available at all stores & may be subject to availability. • Prices are valid while stocks last and we reserve the right to correct any errors or omissions without prior notice. • Images shown throughout this catalogue are for illustrative purposes only - some items may vary.

FOLLOW US ON FACEBOOK [FACEBOOK.COM/TRADESMARTINDUSTRIAL](https://www.facebook.com/TRADESMARTINDUSTRIAL)

PRINTED BY: **PROMINENTGROUP**  
BEST PRINTERS IN THE COUNTRY

**PH. 1300 655 363**

